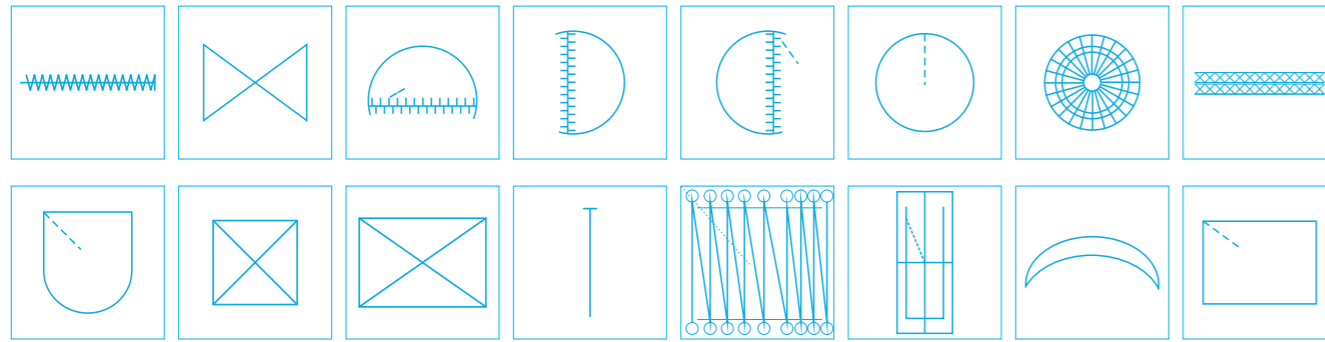
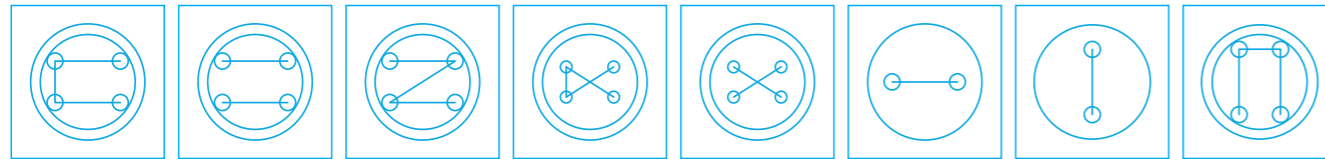


Bartacking Machine



Button Attaching Machine



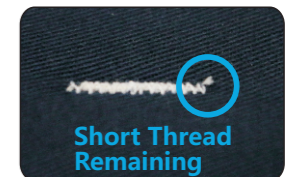
Thread Cleanness High Speed Electronic Bartacking & Button Attaching Machine



Jack Wechat



Jack Facebook



2019.09

JACK SEWING MACHINE CO.,LTD.

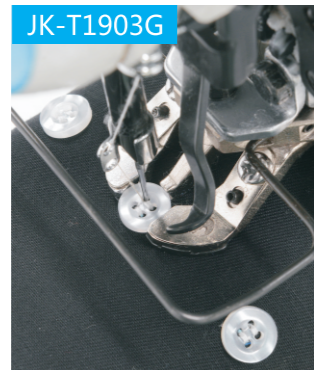
No. 15 South Airport Road, Jiaojiang District, Taizhou, Zhejiang, PRC
TEL: 0086-576-88177782 88177767
FAX: 0086-576-88177787

E-mail: sales@chinajack.com
www.chinajack.com

JK-T1900G/1903G/1906G

JK-T1900G/1903G/1906G

Item: Thread Cleanness High Speed Electronic Bartacking & Button Attaching Machine
 Features: One Machine, Multi Functions, High Efficiency, Short Thread Remaining

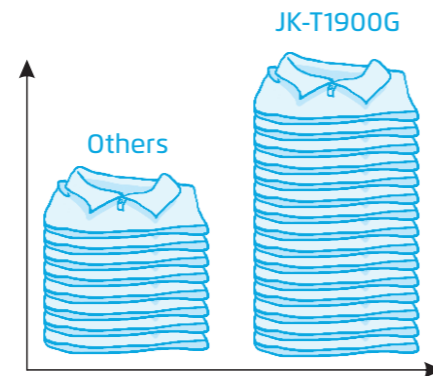


1 One Machine, Multi Functions

JK-T1900GSK/1903GSK: Bartacking and Button attaching can be transferred easily. Increase efficiency and saving cost.

JK-1906GP: Suitable for various kinds of elastic attaching.

JK-1906GS: Suitable for tacking and decorative sewing of non-woven bags, shopping bags, velcro, shoes, luggage etc.. The sewing range is 60*50.



2 Super Heavy Duty Can Be Sewing Smoothly

Can easily sew the backing of luggage and fishing net.

3 Sewing Easily; High Efficiency

The max speed is 3200 rpm, high efficiency.



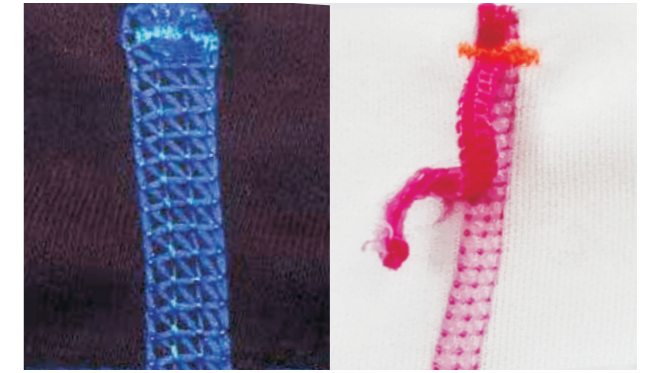
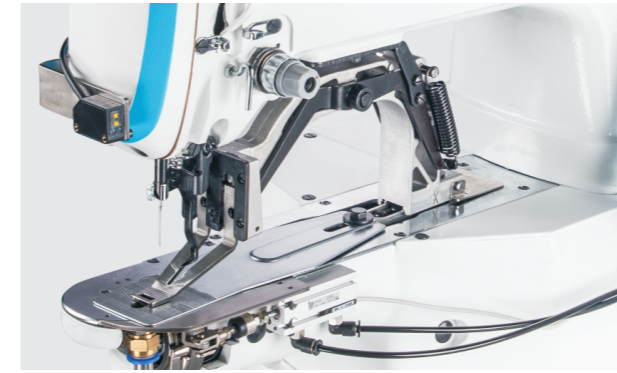
4 Simple and Intuitive, Easy to Operate

Operator panel can display parameters and patterns, Easy to learn and easy to use. No need to worry about remembering parameters



5 Automatic Button Feeding Device, High Efficiency (JK-T1903GR)

Automatic button feeding, the efficiency is increased to 180% compared with manual feeding



6 Thread Remaining Tacking and Cleanness

No need manual trimming. High efficiency.

Bartacking Machine Specification

Model	application	Needle	Needle No.	Thread No.	Sewing range (X) (mm)	Sewing range (Y) (mm)	Presser Foot Lifting Height (mm)	Max. Speed (s.p.m)	Volume (mm)	Weight (kg)
JK-T1900GSK	Light and Middle Fabric	DP×5 16#	1	2	40	30	13	3200	805×405×525	55/64
JK-T1900GS	Light and Middle Fabric	DP×5 16#	1	2	40	30	13	3200	805×405×525	55/64
JK-T1900GHK	Heavy Fabric	DP×17 19#	1	2	40	30	13	2700	805×405×525	55/64
JK-T1900GH	Heavy Fabric	DP×17 19#	1	2	40	30	13	2700	805×405×525	55/64
JK-T1900GSXK	Short Thread Remaining	DP×5 16#	1	2	40	30	13	3200	805×405×525	55/64
JK-T1900GMK	Knitted Fabric	DP×5 11#	1	2	40	30	13	2700	805×405×525	55/64
JK-T1900GM	Knitted Fabric	DP×5 11#	1	2	40	30	13	2700	805×405×525	55/64
JK-T1900GY	Cap Hole	DP×5 16#	1	2	40	30	13	2700	805×405×525	55/64
JK-T1900GN	Fishing Net	DP×17 19#	1	2	40	30	13	2300	805×405×525	55/64
JK-T1900GL	Socks Sewing	DP×17 14#	1	2	40	35	13	2000	805×405×525	55/64
JK-T1906GS	Pattern	DP×17 14#	1	2	60	50	10	2700	805×405×525	55/64
JK-T1906GP	Elastic Attaching	DP×17 14#	1	2	60	50	10	2700	805×405×525	55/64

Note: Auto presser foot lifter, auto trimmer, auto wipper are standards. K: Bartacking and Button attaching can be transferred easily. X is short thread remaining.

Button Attaching Machine Specification

Model	application	Needle	Needle No.	Thread No.	Button diameter (mm)	Button size (mm)	Presser Foot Lifting Height (mm)	Max. Speed (s.p.m)	Volume (mm)	Weight (kg)
JK-T1903GSK	Basic Model	DP×17 14#	1	2	Φ8-Φ30	X:2.4-6.8 Y:2.4-6.8	10	2700	805×405×525	55/64
JK-T1903GR	Auto Button Feeding Device	DP×17 14#	1	2	Φ9-Φ22	X:2.4-6.8 Y:2.4-6.8	13	2700	1020×870×1390	131/177
JK-T1903GS	Button Attaching Machine	DP×17 14#	1	2	Φ8-Φ30	X:2.4-6.8 Y:2.4-6.8	10	2700	805×405×525	55/64

Note: Auto presser foot lifter, auto trimmer, auto wipper are standards. K: Bartacking and Button attaching can be transferred easily.