

Z7系列

产品使用说明书&产品零件图册

Manual book & parts book

JACK 杰克

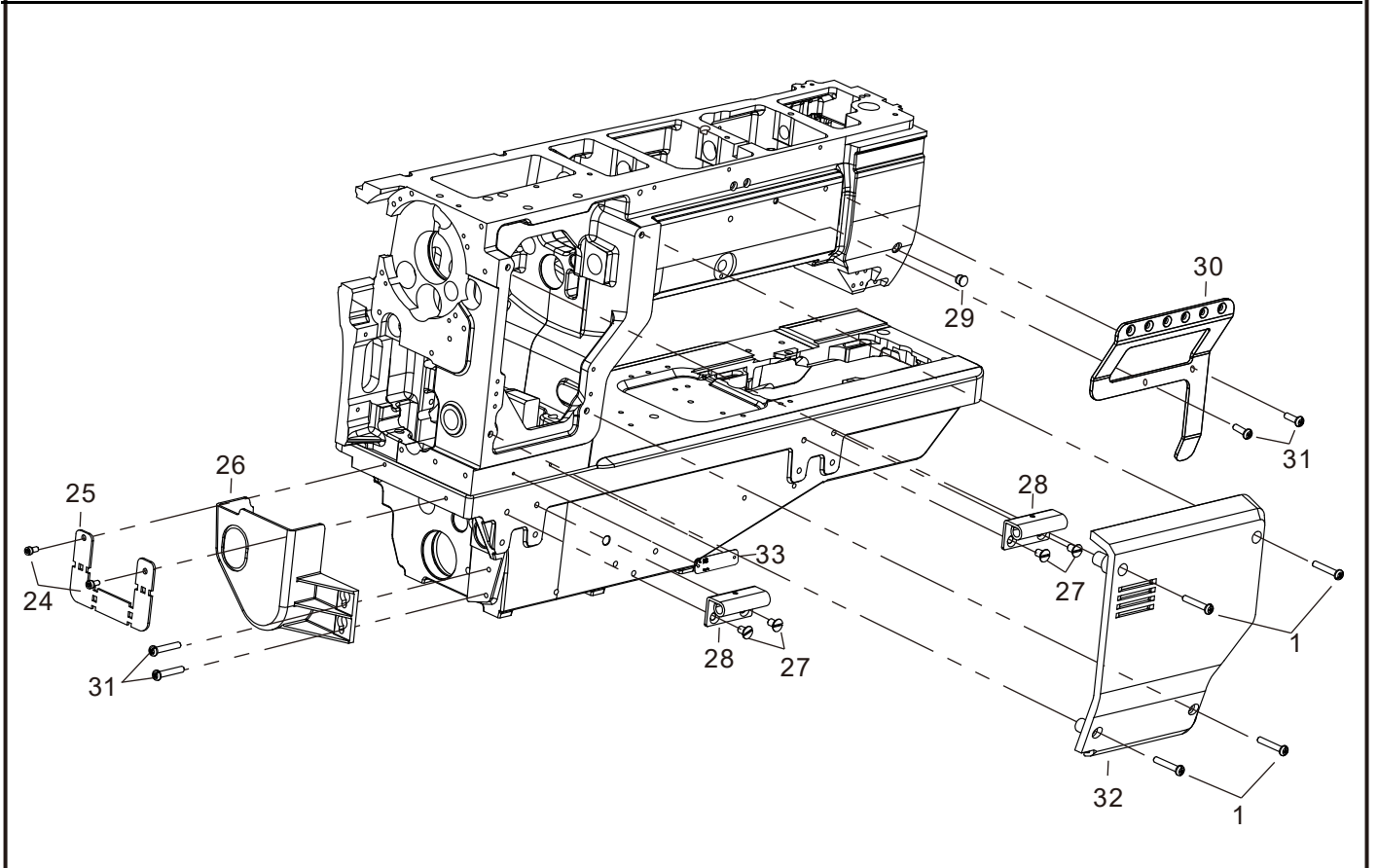
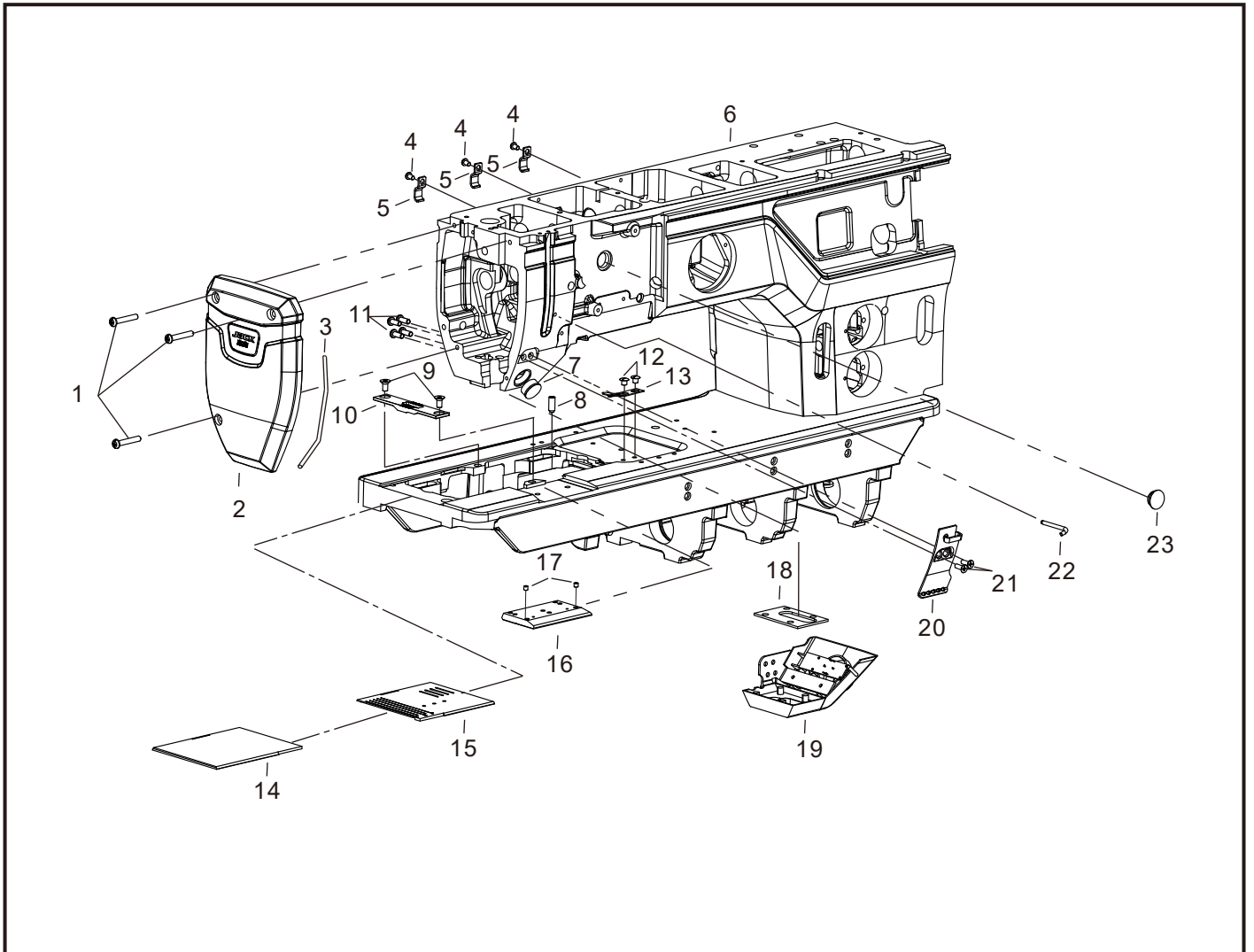
零件样本

PARTS BOOK

零件样本/Parts Book

A.机体部件/Machine Body Mechanism	2
B.上盖部件/Upper Cover Mechanism	4
C.上轴部件/Upper Shaft Mechanism	6
D.挑线部件/Thread Take-up Mechanism	8
E.针杆摆动部件/Needle Bar Oscillation Mechanism	10
F.上送料部件/Upper Feed Mechanism	12
G.抬压脚部件/Presser Foot Mechanism	16
H.下轴部件/Lower Shaft Mechanism	18
I.下送料部件/Lower Feed Mechanism	22
G.旋梭部件/Rotary Hook Mechanism	24
K.梭架部件/Feed Dog Mechanism	26
L.剪线部件/Thread Trimmer Mechanism	28
M.绕线部件/Winding Mechanism	30
N.夹线器部件/Bobbin Winder Mechanism	32
O.针距调节部件/Stitch Length Adjustment Mechanism	34
P.按钮部件/Button Mechanism	38
Q.供油润滑部件/Lubrication Mechanism	40
R.电磁阀部件/Solenoid Mechanism	42
S.电控部件/Electronic Control Mechanism	44
K.附件/Attachments Mechanism	46

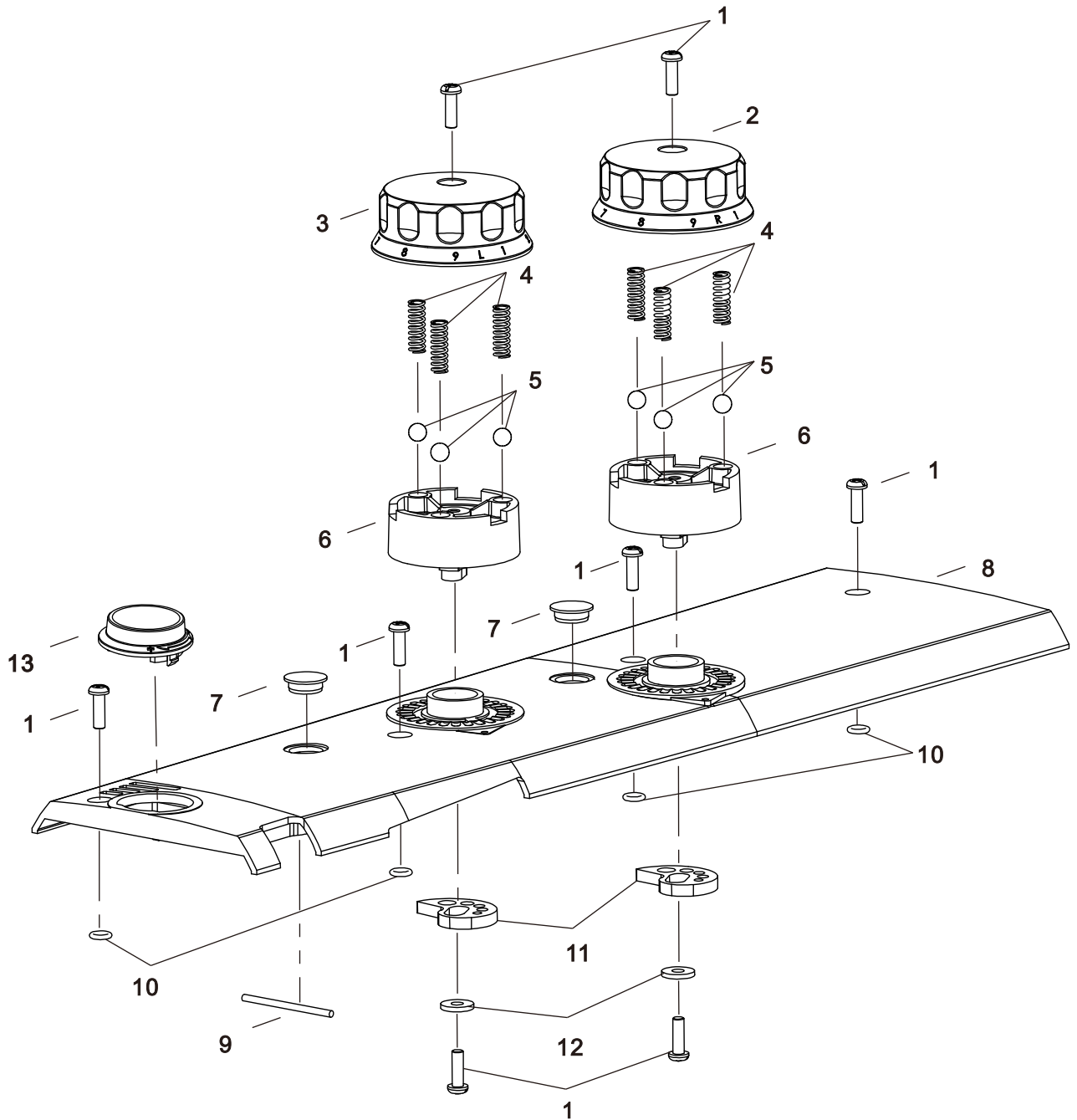
A. 机体部件/body mechanism



A.机体部件/body mechanism

序号 No.	件号 Part No.	零部件名称	Name of parts	数量amt.
1	S040010	复合槽盘头螺钉M5×30	Composite slot pan head screw M5×30	7
2	930002158	面板(喷漆)	Panel (spray paint)	1
3	150422003	密封条φ3	Sealing strip φ3	1
4	S04035	复合槽螺钉M4×6(进口)	Composite slot pan head screw M4×6 (import)	3
5	150411027	电线固定夹	Wire fixing clip	3
6	930002010	Z7机壳组件(喷漆)	ZT shell component (spray paint)	1
7	150411033	电子夹线器φ18孔孔塞	Electronic clamp φ18 hole plug	1
8	1504NS30001	内六角波珠螺丝M6×15	Hexagon Socket Head Cap Screw M6 × 15	1
9	S260016	内六角沉头螺钉M5×10(进口)	Internal hexagon countersunk screw M5×10 (import)	2
10	150415003	单针针板(E2)	Single Needle Plate (E2)	1
11	S040013	复合槽盘头螺钉M4×10	Composite slot pan head screw M4×10	4
12	1504NS10002	开槽半圆头螺钉M5×5	Slotted Countersunk Head Screw M5 × 5	2
13	150412029	止推板	Stop Push Board	1
14	150415001	左推板	Left Push Board	1
15	150415002	右推板	Right Push Board	1
16	150412032	前推板	Front Push Board	1
17	S09103	内六角平端紧定螺钉M4×4	Hexagon Socket Head Set Screw M4 × 4	2
18	150423009	LED灯罩油毡	LED lampshade oil seal	1
19	15041105200	LED灯罩组件	LED lampshade assembly	1
20	150413005	过线板	Wiring plate	1
21	421S17001	十字沉头螺钉M4×12	Cross recessed countersunk screw M4×12	2
22	150413004	过线杆	Wiring rod	1
23	150422016	机壳φ15孔孔塞	Shell φ15 hole plug	1
24	S05949	内六角圆柱头螺钉M4×8(12.9级)	Hexagon Socket Head Cap Screw M4 × 8 (12.9 Grade)	2
25	150412061	束线板	Tensioning Board	1
26	150411049	同步带防护罩	Synchronous Belt Protective Cover	1
27	S020003	开槽沉头螺钉M6×10	Slotted countersunk screw M5×10	4
28	150412028	平板固定铰链	Flat fixed chain	2
29	150422002	机壳φ8孔孔塞	Shell φ8 hole plug	3
30	150413014	背部过线支架组件	Back wire support bracket assembly	1
31	S040001	复合槽盘头螺钉M5×16	Composite slot pan head screw M5×16	4
32	150411010	后盖板	Rear cover plate	4
33	13837003	型号牌	Model plate	1

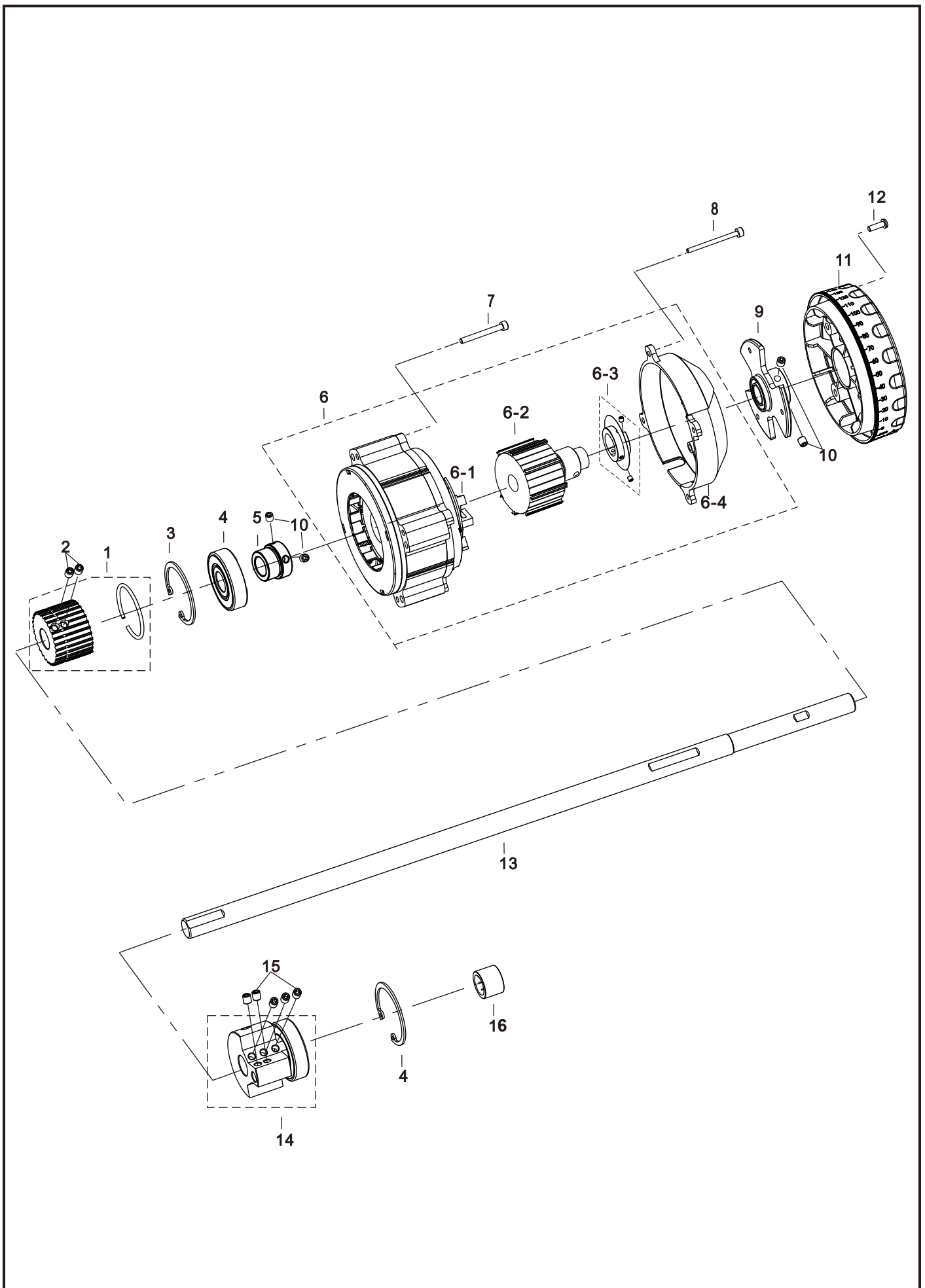
B.上盖板部件/Top Cover Component



B.上盖板部件/Top Cover Component

序号 No.	件号 Part No.	零部件名称	Name of parts	数量
1	S040001	复合槽盘头螺钉M5×16	Combination Slot Pan Head Screw	8
2	150411013	交替量调节手轮一	Alternating Quantity Adjustment Handwheel II	1
3	150411060	交替量调节手轮二	Alternating Quantity Adjustment Handwheel II	1
4	150427018	弹簧	Spring	6
5	155209020	钢珠(Sφ8)	Steel Ball	6
6	150401010	交替量手轮座二	Alternating Quantity Adjustment Handwheel Base II	2
7	150422016	机壳φ15孔孔塞	Machine Housing φ15 Hole Plug	2
8	930002157	上盖板(喷漆)	Upper Cover Plate	1
9	150422003	密封条Φ3	Sealing Strip Φ3	1.4M
10	20122038	O型圈 (Φ6×2)	O-Ring (Φ6×2)	4
11	150410006	交替量调节凸轮	Alternating Quantity Adjustment Cam	2
12	150428016	交替量凸轮安装垫片	Alternating Quantity Cam Installation Shim	2
13	150411061	调压螺钉旋钮	Pressure Adjustment Knob	1

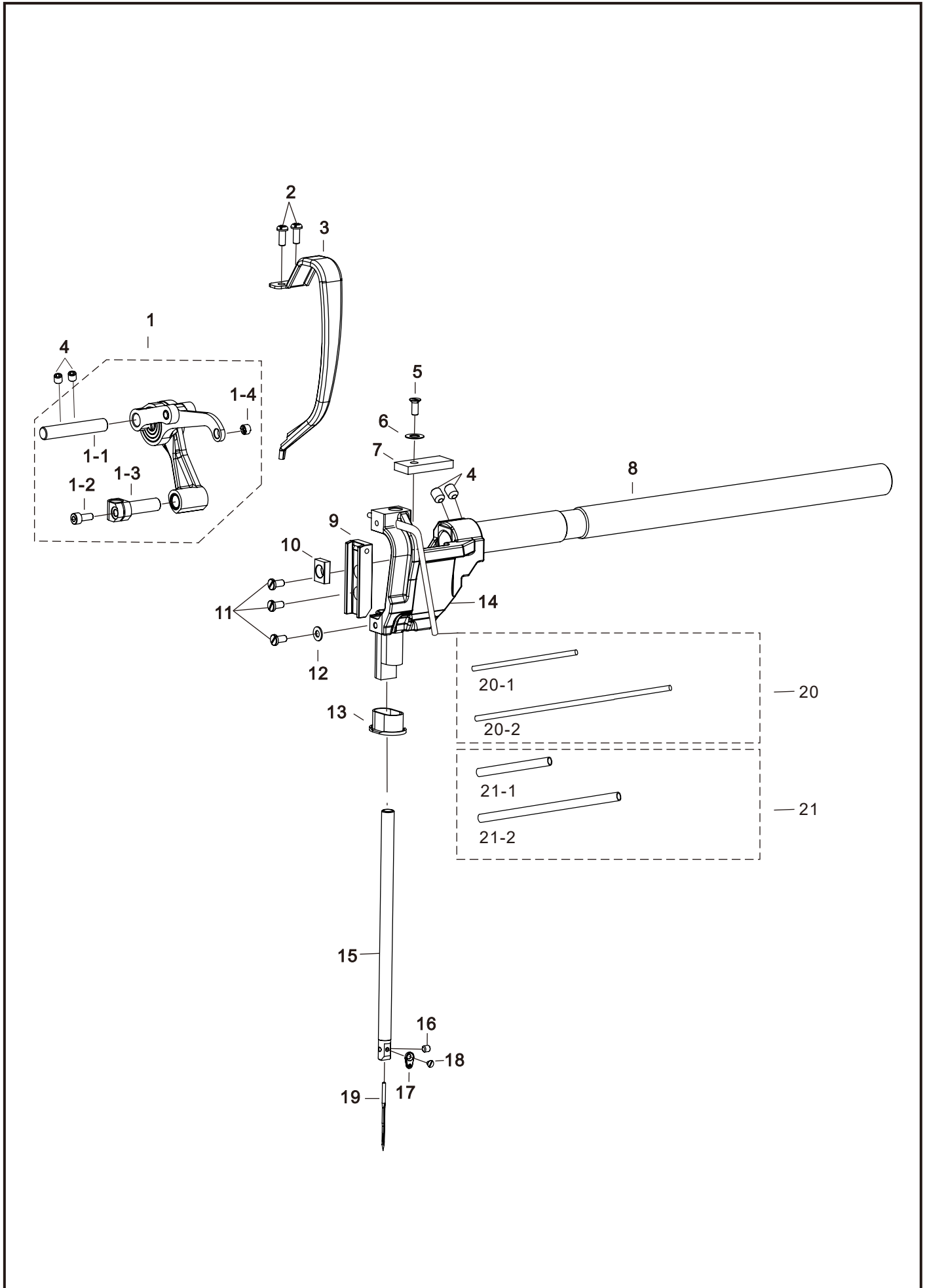
C. 上轴部件/Upper Shaft Component



C.上轴部件/Upper Shaft Component

序号 No.	件号 Part No.	零部件名称	Name of parts	数量amt.
1	15042500200	上同步带轮组件	Upper timing belt pulley assembly	1
2	S10009	内六角凹端紧定螺钉M6x8	Hexagonal Concave End Set Screw M6x8	2
3	H01129	孔用弹性挡圈A型 47	Hole Elastic Stop Ring Type A 47	2
4	B040009	深沟球轴承6005ZZ	Deep Groove Ball Bearing 6005ZZ	1
5	150403043	上轴右轴承衬套	Upper Shaft Right Bearing Bushing	1
6	15043300100	光电伺服电机	Optical Servo Motor (Thick Material Large Pancake Motor)	1
6-1	195500129	定子绕组组件	Stator winding assembly	1
6-2	19500130	转子总成	Rotor assembly	1
6-3	195230024	磁电编码器组件	Magnetic encoder assembly	1
6-4	195111123	绝缘防护罩	Insulation protective sleeve	1
7	701S13022	内六角圆柱头螺钉M5×45	Hexagonal Socket Head Cap Screw M5x45	4
8	S05933	内六角圆柱头螺钉M4×55	Hexagonal Socket Head Cap Screw M4x55	4
9	150403044	手轮座	Handwheel Bracket	1
10	S10018	紧定螺钉M6×0.75×6	Set Screw M6×0.75×6	4
11	150411026	手轮	Handwheel	1
12	S040001	复合槽盘头螺钉M5×16	Composite Pan Head Screw M5×16	3
13	150402001	上轴	Upper Shaft	1
14	15040400100	针杆曲柄组件	Needle Roller and Cam Follower Assembly	1
15	413S14001	内六角平端紧定螺钉M6×6	Hexagonal Flat End Set Screw M6×6	5
16	B090002	冲压外圈滚针轴承HK1616	Stamped outer ring needle bearing HK1616	1

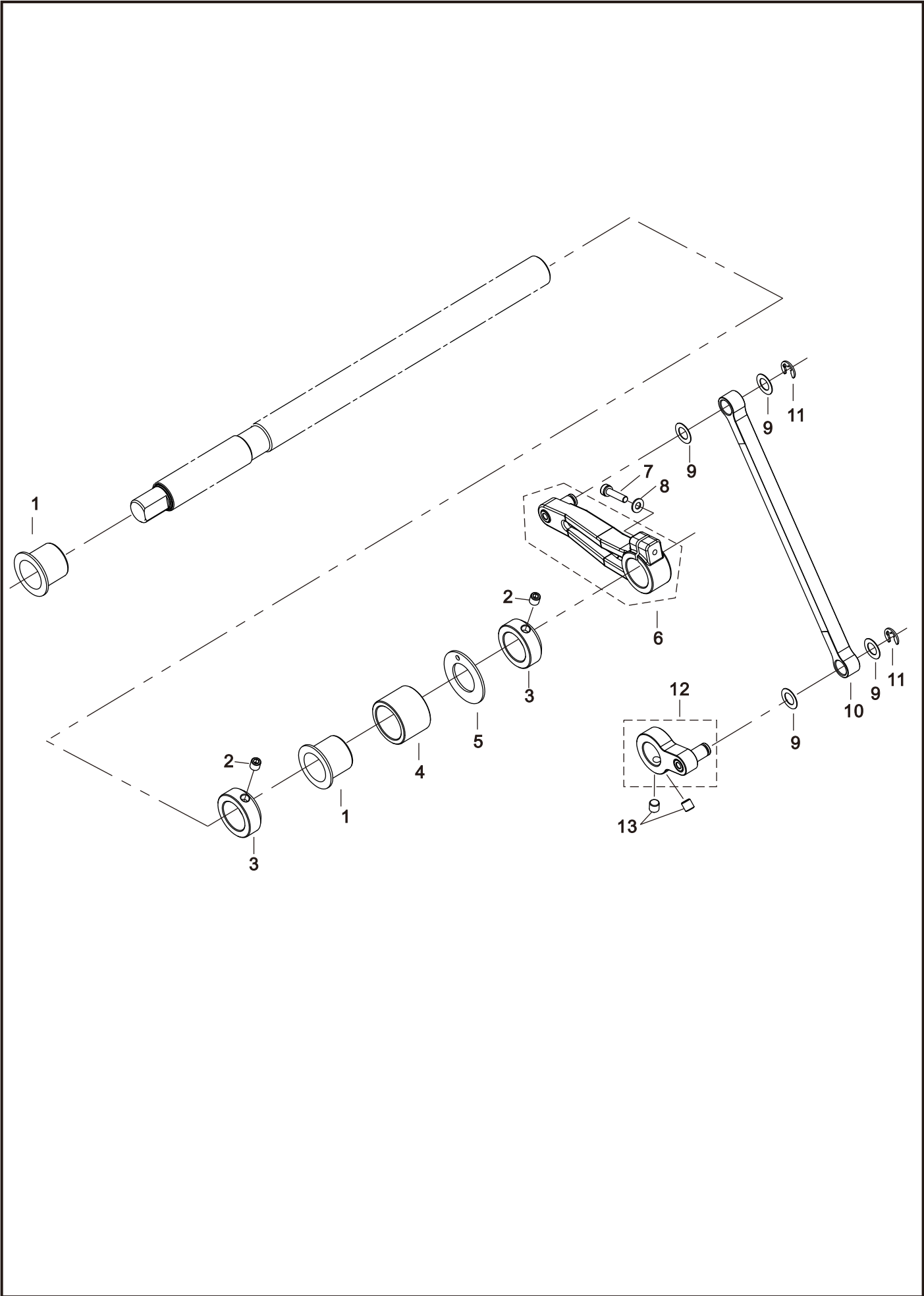
D.挑线部件/Thread lifting component



D.挑线部件/Thread lifting component

序号 No.	件号 Part No.	零部件名称	Name of parts	数量
1	15040400400	挑线杆组件(φ32)	Tierod assembly (page 32)	1
1-1	150426001	挑线杆销	Thread take-up leverpin	1
1-2	413513017	内六角圆柱头螺钉M4×10	Composite pan head screw M4 x 10	1
1-3	150404007	针杆接头	Needle bar joint	1
1-4	150412001	挑线杆过线珠	Thread take-up leverthread guide bead	1
2	5040013	复合槽盘头螺钉M4×10	Composite pan head screw M4 x 10	2
3	150404008	挑线杆防护罩	Tie rod dust cover	1
4	413514001	内六角平端紧定螺钉M6×6	Hexagon socket set screw with flat point M6×6	4
5	207517005	开槽沉头螺钉M4X8	Slottedcountersunk head screw M4 x 8	1
6	150428017	垫片	Washer	1
7	150423001	摆动架油毡	Rocking arm oiler	1
8	150402005	摆动轴	Rocking shaft	1
9	150409002	滑块导轨	Slider guide	1
10	150409007	针杆摆动架滑块(铜)	Needle roller support slide(steel)	1
11	301511024	滑块导座螺钉M4×8	Slider guide seat screw4 x 8	3
12	W01001	平垫圈4	Flatwasher 4	1
13	150411001	摆动架胶套	Swing frame rubber bushing	1
14	150404010	针杆摆动架	Needle roller support	1
15	150402022	针杆(DLC处理后)	Needle roller (DLC treated)	1
16	S09103	内六角平端紧定螺钉M4×4	Hexagon socket head cap screw M4 x 4	1
17	150412002	过线环	Wire ring	1
18	S020002	过线环螺钉	Wire ringscrew	1
19	150417002	机针DP×35R 19#	Machine needle DPx35R 19#	1
20	150423007	脱脂棉油线φ3	Dehydrated cotton oil line φ 3	0.75M
20 -1	150423007	脱脂棉油线φ3	Dehydrated cotton oil line φ 3	0.1M
20 -2	150423007	脱脂棉油线φ3	Dehydrated cotton oil line φ 3	0.65M
21	150421001	硅胶油管φ3×φ4	Silicone oil pipe φ 3× φ 4	0.5M
21-1	150421001	硅胶油管φ3×φ4	Silicone oil pipe φ 3× φ 4	0.45M
21-2	150421001	硅胶油管φ3×φ4	Silicone oil pipe φ 3× φ 4	0.05M

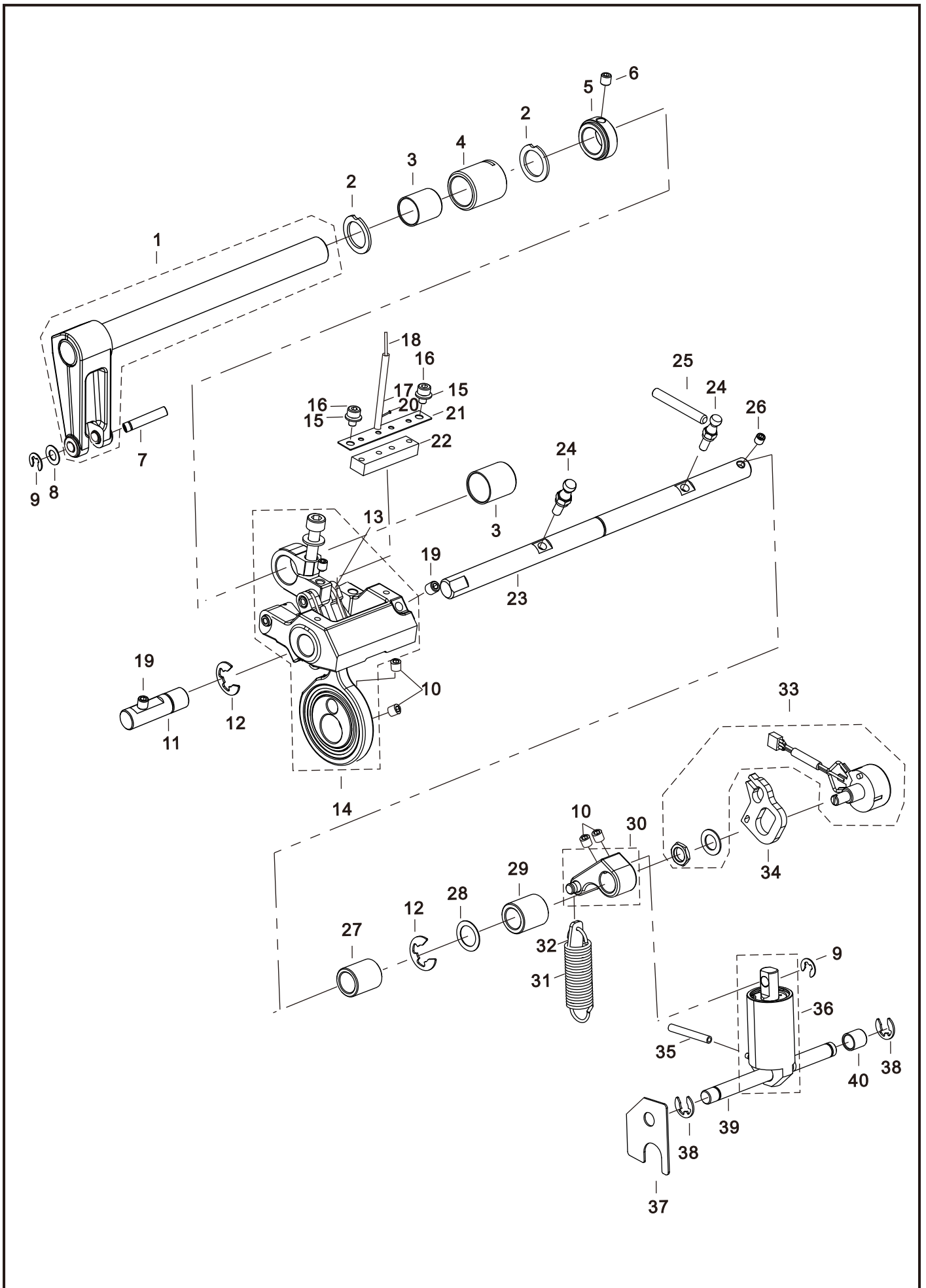
E. 针杆摆动部件/Needle Bar Swing Mechanism



E.针杆摆动部件/Needle Bar Swing Mechanism

序号 No.	件号 Part No.	零部件名称	Name of parts	数量amt.
1	150403002	摆动轴前套	Swinging Shaft Sleeve	2
2	S10018	紧定螺钉M6×0.75×6	Set screw M6×0.75×6	2
3	150408006	摆动轴紧圈	Swinging Shaft Snap Ring	2
4	150403003	摆动轴右套	Swinging Shaft Right Sleeve	1
5	150428010	摆动轴垫片	Swinging Shaft Washer	1
6	15040401700	摆动后曲柄组件	Swinging Rear Crankshaft Assembly	1
7	207513008	内六角圆柱头螺钉(M4×16)	Inner Hexagon Cylindrical Head Bolt (M4×16)	1
8	W01001	平垫圈4	Flat Washer 4	1
9	150428018	送料大连杆垫片	Feeding Connecting Rod Washer	4
10	15040501900	送料大连杆组件	Feeding Connecting Rod Assembly	1
11	H05013	开口挡圈6	Open Retaining Ring 6	2
12	15040401400	下送料曲柄组件	Lower Feeding Crankshaft Assembl	1
13	413S14001	内六角平端紧定螺钉M6×6	Internal hexagon flat end set screw M6×6	2

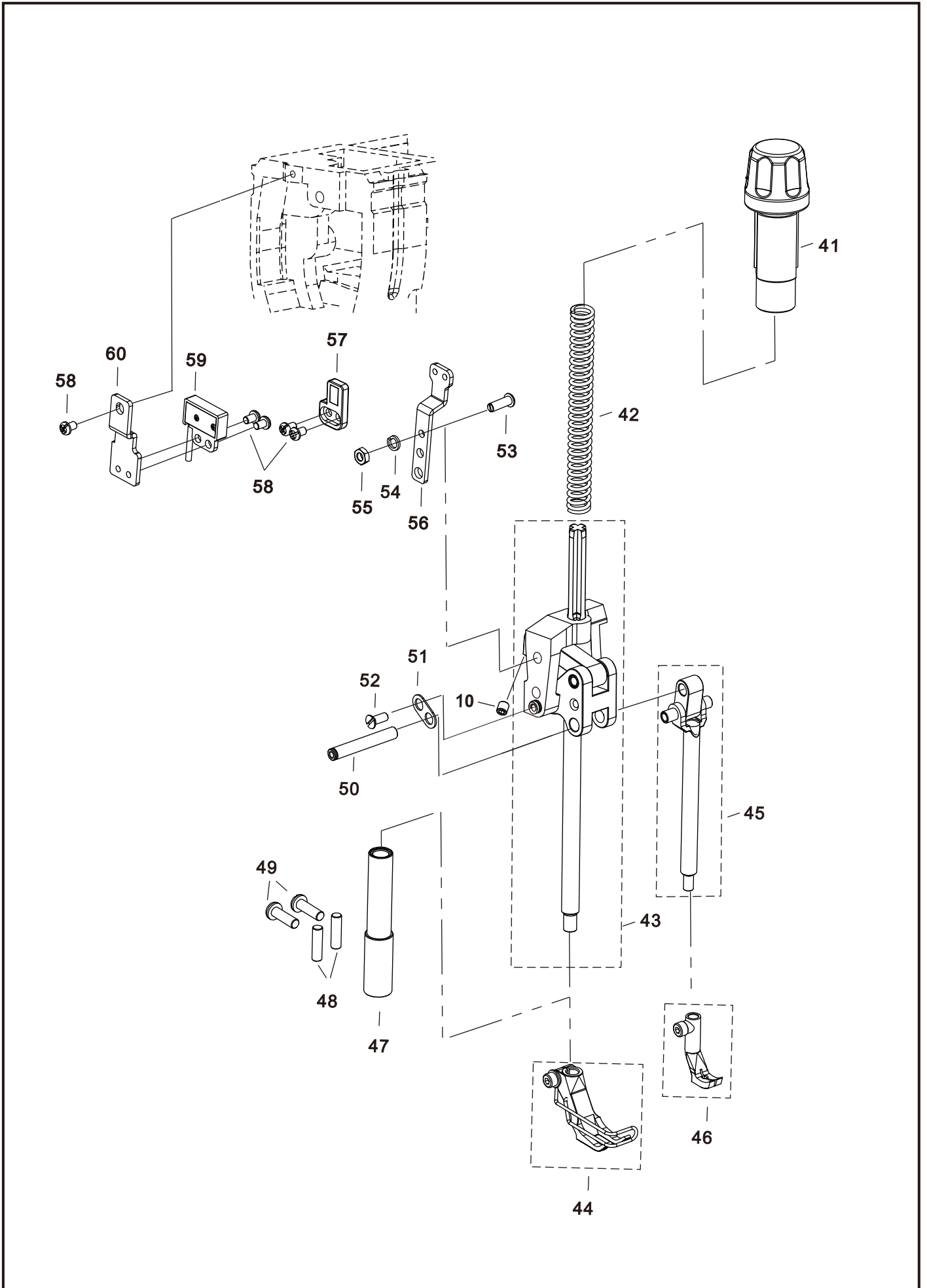
F. 上送料部件/Upper Feeding Mechanism



F.上送料部件/Upper Feeding Mechanism

序号 No.	件号 Part No.	零部件名称	Name of parts	数量amt.
1	15040401800	上送料曲柄组件	Feed material crankshaft assembly	1
2	150428007	垫片	gasket	2
3	150403024	轴套	bushing	2
4	150403007	钢套	sleeve	1
5	150408003	紧圈	lock ring	1
6	S10018	紧定螺钉M6×0.75×6	set screw M6×0.75×6	1
7	150426003	上送料曲柄连接销	feed material crankshaft connecting pin	1
8	150428017	垫片	gasket	1
9	H05917	开口挡圈5	snap ring 5	2
10	413S14001	内六角平端紧定螺钉M6×6	Hexagon socket set screw with flat point M6×6	5
11	150426011	交替量调节架左销	alternating volume adjustment frame left pin	1
12	H05004	开口挡圈10	snap ring 10	2
13	150423002	脱脂棉油线φ2	oil hole plug φ2	1
14	15040500200	压脚交替曲柄大连杆组件	pressurized alternating crankshaft large connecting rod assembly	1
15	W01001	平垫圈4	flat washer 4	2
16	S05115	内六角圆柱头螺钉M4×6(滚花)	hexagon socket button head screw M4×6 (oil)	2
17	150421006	油管Φ5×Φ7(进口)	oil pipe φ5×φ7 (inlet)	0.15M
18	150423007	脱脂棉油线φ3	oil hole plug φ3	0.55M
19	S10009	内六角凹端紧定螺钉M6×8	Internal hexagon recessed end set screw M6×8	2
20	1504NS30003	油管固定圆钢钉φ0.9×13	oil pipe fixed steel ball φ0.9×13	1
21	150423006	油毡	oil tank	1
22	150412035	油毡固定板	oil tank fixing plate	1
23	150402013	交替量调节轴	alternating volume adjustment shaft	1
24	1504NS30002	交替量调节球头螺杆	alternating volume adjustment ball head screw	2
25	S090004	内六角平端紧定螺钉M6×45	hexagon socket head cap screw M6×45	1
26	S10006	内六角凹端紧定螺钉M5×6	hexagon concave head cap screw M5×6	1
27	150403041	针距调节曲柄左轴套	needle distance adjustment crankshaft left sleeve	1
28	150428014	垫片	gasket	1
29	150403010	针距调节曲柄右轴套	needle distance adjustment crankshaft right sleeve	1
30	15040406800	压脚交替拉簧曲柄组件	pressurized alternating pull rod crankshaft assembly	1
31	150427002	交替量拉簧	alternating volume leve	1
32	150422012	缓冲垫	buffer pad	1
33	15043001900	电位器组件	potentiometer assembly	1
34	150411051	限位块	limit block	1
35	41845223	气管φ4×φ2.5	air cylinder φ4×φ2.5	0.35M
36	15044500400	交替量气缸组件	air cylinder component	1
37	150412023	弹簧轴限位板	spring shaft limit plate	1
38	H05001	开口挡圈7	open slot 7	2
39	150402012	拉簧固定轴	pull ring fixed shaft	1
40	150403008	拉簧轴右套	pull shaft right sleeve	1
41	150411005	调压螺钉	pressure regulating screw	1
42	150427001	压紧杆弹簧	presser foot spring	1
43	15040201100	压脚交替组件	presser foot assembly	1

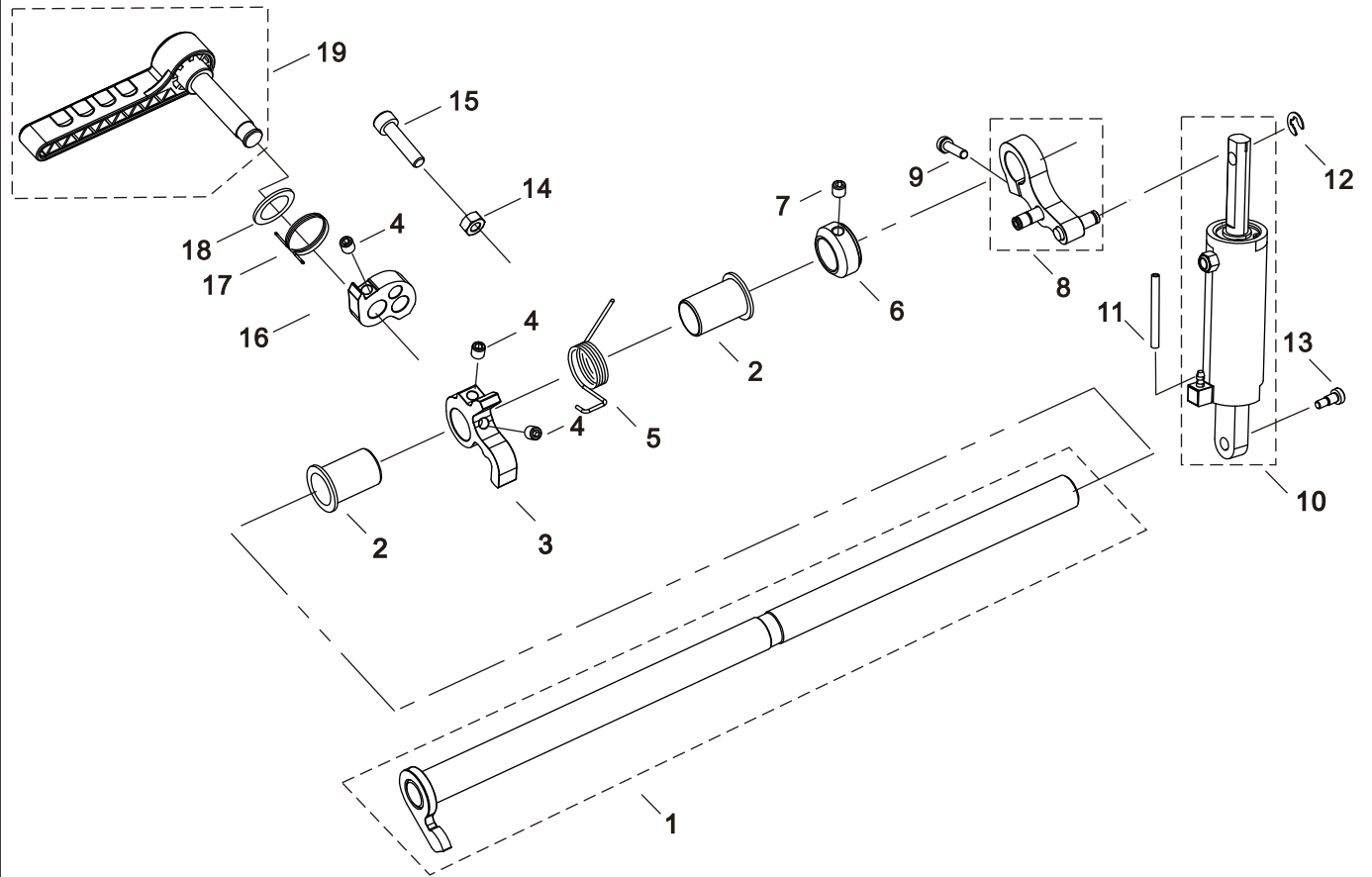
F. 上送料部件/Upper Feeding Mechanism



F.上送料部件/Upper Feeding Mechanism

44	15041600100	大压脚组件	large presser foot assembly	1
45	15040200900	小压脚杆组件	small presser foot rod assembly	1
46	15041600300	小压脚组件	small presser foot assembly	1
47	15040300600	压紧杆下套组件	presser bar bushing assembly	1
48	150426015	压紧杆套锁紧销	presser bar sleeve lock washer	2
49	S040001	复合槽盘头螺钉M5×16	composite pan head screw M5×16	2
50	150426013	小压脚提升组件连接销	small presser foot lift assembly connecting pin	1
51	150428008	限位垫片	limit washer	1
52	207S17005	开槽沉头螺钉M4X8	slotted countersunk head screw M4×8	1
53	1504NS10008	薄厚检测固定支架螺钉	thickness detection fixed bracket screw	1
54	W02001	标准型弹簧垫圈5	standard type spring gasket 5	1
55	N01017	六角螺母M5(进口)	hexagon nut M5 (imported)	1
56	150404085	薄厚检测支架一	thickness detection bracket one	1
57	150430030	薄厚检测装置组件	thickness detection device assembly	1
58	S04035	复合槽螺钉M4×6(进口)	composite slot screw M4×6 (imported)	5
59	11551100100	薄厚检测磁铁组件	thickness detection magnet assembly	1
60	150404086	薄厚检测支架二	thickness detection bracket two	1

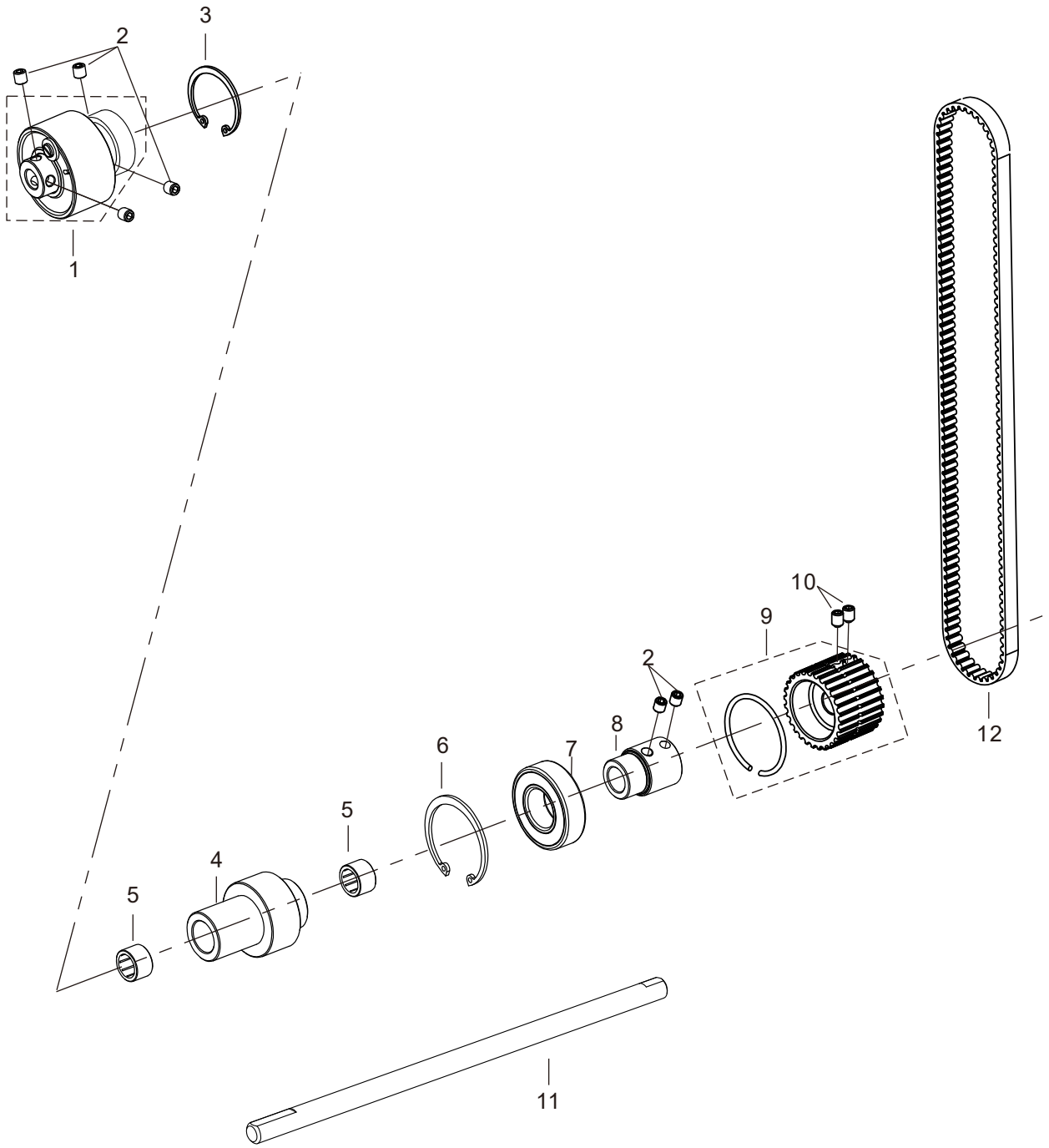
G. 抬压脚部件/Presser Foot Lifting Mechanism



G.抬压脚部件/Presser Foot Lifting Mechanism

序号 No.	件号 Part No.	零部件名称	Name of parts	数量amt.
1	15040202900	压脚提升轴组件	foot-lifting shaft assembly	1
2	150403016	抬压轴轴套	Lifting pressure shaft bushing	2
3	150404044	压脚提升曲柄	Foot-lifting crankshaft	1
4	413514001	内六角平端紧定螺钉M6×6	set screw M6×6	3
5	150427009	抬压轴复位扭簧	draw press shaft reset torsion spring	1
6	150408003	紧圈	fastening	1
7	S10018	紧定螺钉M6×0.75×6	set screw M6×0.75×6	1
8	15040404500	压脚提升曲柄右组件	foot-lifting crank right assembly	1
9	207513008	内六角圆柱头螺钉(M4×16)	hexagon socket head cap screw (M4×16)	1
10	15044500200	抬压脚气缸组件	draw press foot cylinder assembly	1
11	41845223	气管φ4×φ2.5	air pipe φ 4×φ 2.5	0.4M
12	H05917	开口挡圈5	snap ring 5	1
13	1504NS20001	气缸固定螺钉	cylinder fixing screw	1
14	N01115	六角螺母M6(镀锌)	hexagonal nut M6 (galvanized)	1
15	S05578	内六角圆柱头螺钉M6×25(镀锌)	hexagon socket head cap screw M6×25 (galvanized)	1
16	150410002	压脚提升凸轮	foot-lifting cam	1
17	150427008	抬压扳手复位扭簧	draw press wrench reset torsion spring	1
18	150428023	垫片(厚度0.5)	gasket (thickness 0.5)	1
19	15040404200	压脚提升扳手组件	foot-lifting wrench assembly	1

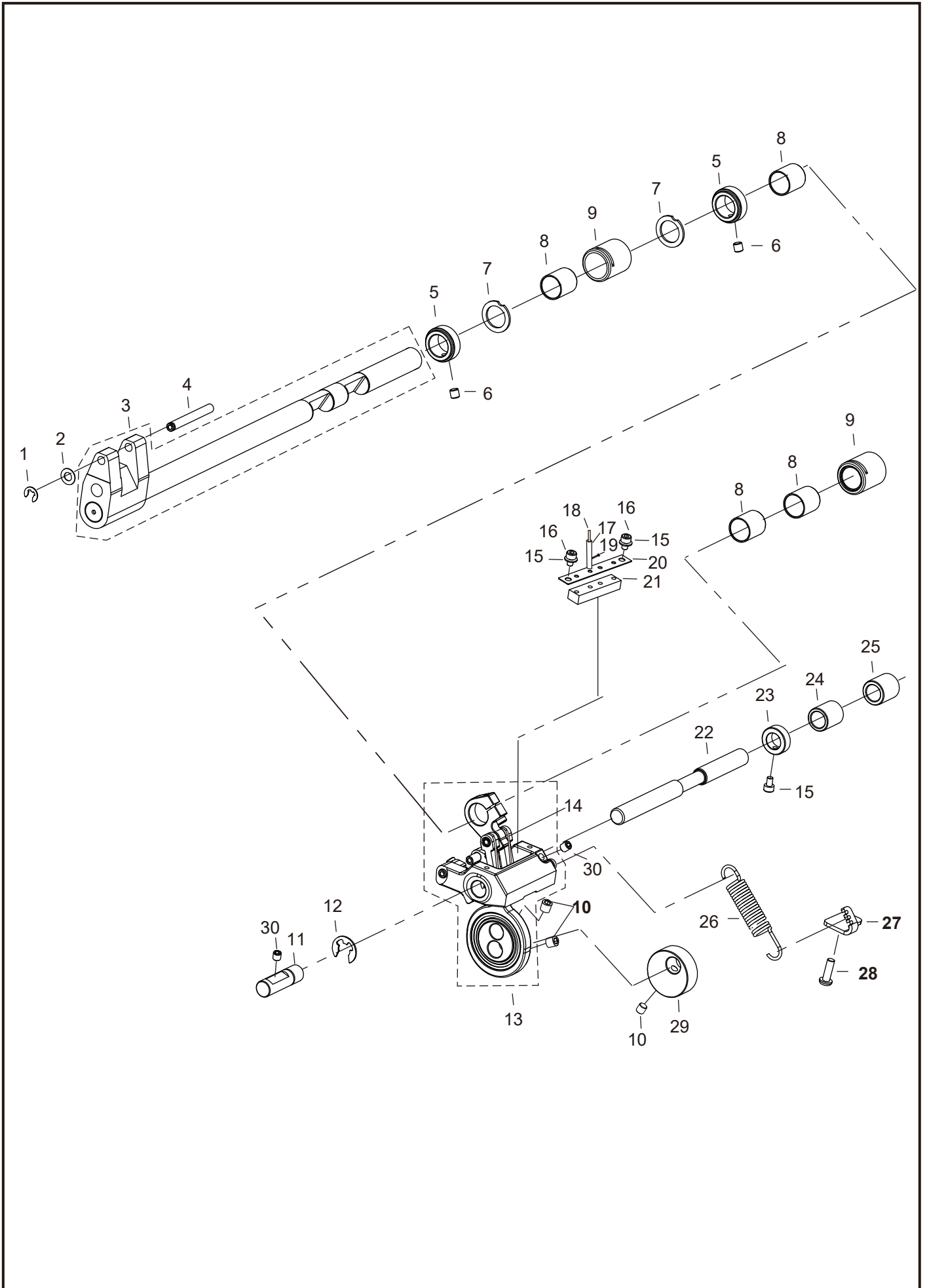
H. 下轴部件/Lower Shaft Mechanism



H. 下轴部件/Lower Shaft Mechanism

序号 No.	件号 Part No.	零部件名称	Name of parts	数量amt.
1	15042500500	离合器组件	Splitter assembly components	1
2	413514001	内六角平端紧定螺钉M6×6	hexagon socket set screw M6 × 6	6
3	H020003	孔用弹性挡圈35	hole elastic ring 35	1
4	150403037	下轴中轴套	lower shaft sleeve	1
5	B090001	冲压外圈滚针轴承HK1210	pressed outer ring needle bearing HK1210	2
6	H020002	孔用弹性挡圈42	hole elastic ring 42	1
7	B040014	深沟球轴承6004ZZ	deep groove ball bearing 6004ZZ	1
8	150403036	下轴右轴承衬套	lower shaft right bearing sleeve	1
9	15042500100	下同步轮组件	lower synchronous wheel assembly	1
10	S10009	内六角凹端紧定螺钉M6×8	hexagon concave end set screw M6 × 8	2
11	150402002	下轴	lower shaft	1
12	150435001	主轴同步带	main shaft synchronous belt	1

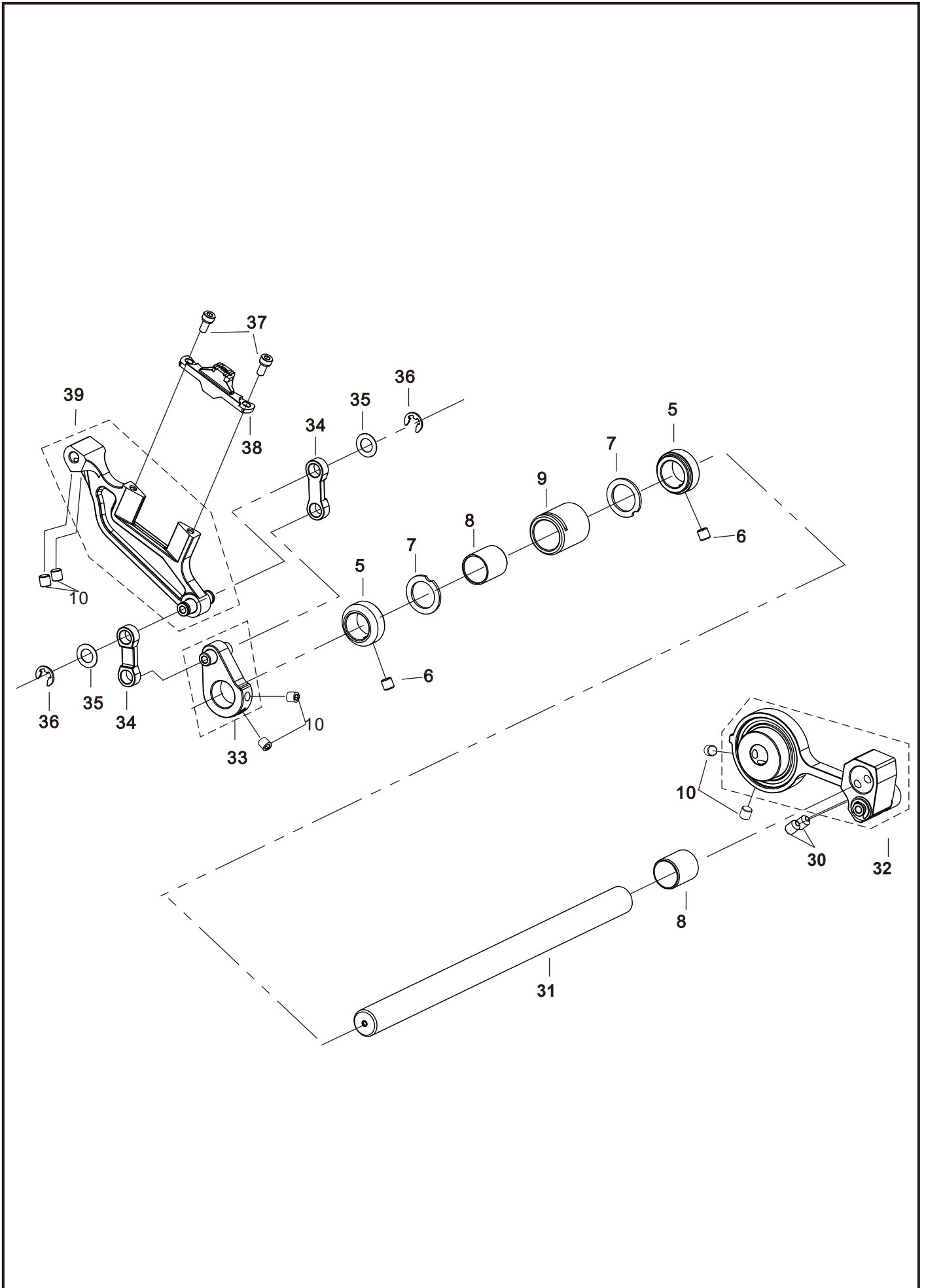
I. 下轴送料部件/Feeding Mechanism



I. 下轴送料部件/Feeding Mechanism

序号 No.	件号 Part No.	零部件名称	Name of parts	数量amt.
1	H05917	开口挡圈5	Opening stop ring 5	1
2	150428017	垫片	Washer	1
3	15040407800	送料曲柄组件	Feeding crank assembly	1
4	150426004	牙架销轴	Tooth rack pin shaft	1
5	150408003	紧圈	Lock ring	4
6	S10018	紧定螺钉M6×0.75×6	Set screw M6×0.75×6	4
7	150428007	垫片	Washer	4
8	150403024	钢套	Bushing	3
9	150403007	轴套	Sleeve	6
10	413S14001	内六角平端紧定螺钉M6×6	Hexagon socket set screw M6×6	9
11	150426011	交替量调节架左销	Alternating adjustment bracket left pin	1
12	H05004	开口挡圈10	Opening stop ring 10	1
13	15040403500	针距调节曲柄大组件	Needle bar adjusting crank large assembly	1
14	150423002	脱脂棉油线φ2	Decontamination cotton thread φ 2	1M
15	S05115	内六角圆柱头螺钉M4×6(滚花)	Hexagon socket head cap screw M4×6 (rolled flower)	3
16	W01001	平垫圈4	Flat washer 4	2
17	150421006	油管Φ5×Φ7(进口)	Oil pipe φ 5×φ 7 (import)	0.25M
18	150423007	脱脂棉油线φ3	Decontamination cotton thread φ 3	0.6M
19	1504NS30003	油管固定圆钢钉φ0.9×13	Oil pipe fixing round head nail φ 0.9×13	1
20	150423006	油毡	Oil felt	1
21	150412035	油毡固定板	Oil felt fixing plate	1
22	150402018	针距调节曲柄轴	Needle bar adjusting crank shaft	1
23	150408005	紧圈	Lock ring	1
24	150403041	针距调节曲柄左轴套	Needle bar adjusting crank left sleeve	1
25	150403010	针距调节曲柄右轴套	Needle bar adjusting crank right sleeve	1
26	150427007	复位弹簧	Reset spring	1
27	150412009	弹簧挂架	Spring holder	1
28	S05124	螺钉M5×16(滚花)	Screw M5×16 (rolled flower)	1
29	150404032	平衡块	Balance Block	1
30	S10009	内六角凹端紧定螺钉M6×8	Hexagon Socket Head Cap Screw M6×8	4
31	150402017	拾牙轴	Tooth holder	1
32	15040403800	拾牙右曲柄大组件	Tooth Extraction Forceps Large Component	1
33	15040403600	拾牙曲柄组件	Tooth Extraction Forceps Component	1
34	150405009	拾牙连杆	Tooth Link Rod	2
35	150428018	送料大连杆垫片	Feeding Connecting Rod Washer	2
36	H05013	开口挡圈6	Open Circlip 6	2
37	S05949	内六角圆柱头螺钉M4×8(12.9级)	Hexagon Socket Head Cap Screw M4×8 (12.9 Grade)	2
38	150414001	单针送料牙(E2)	Single Feeding Tooth (E2)	1
39	15040600100	送料牙架组件	Feeding Tooth Bracket Component	1

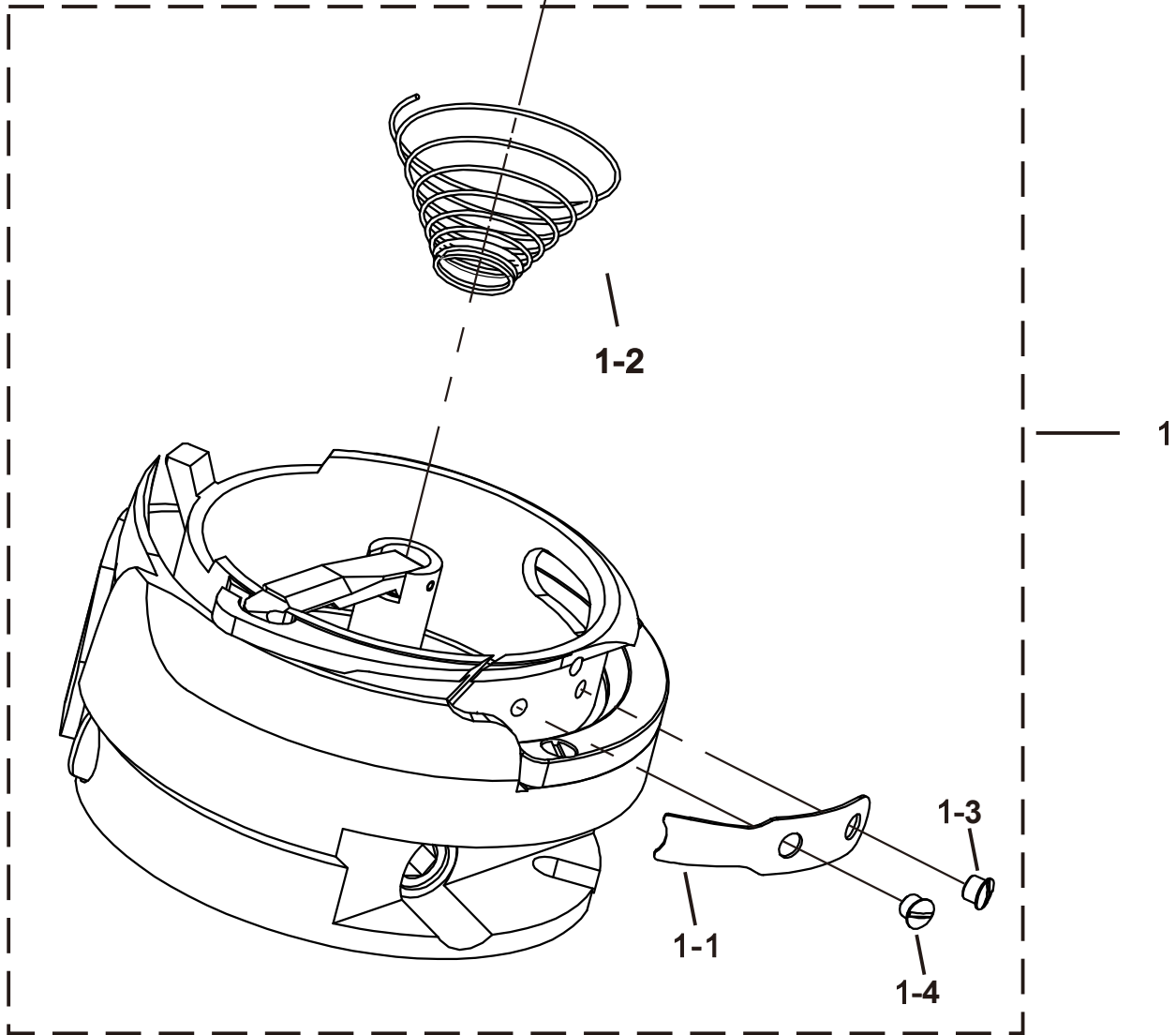
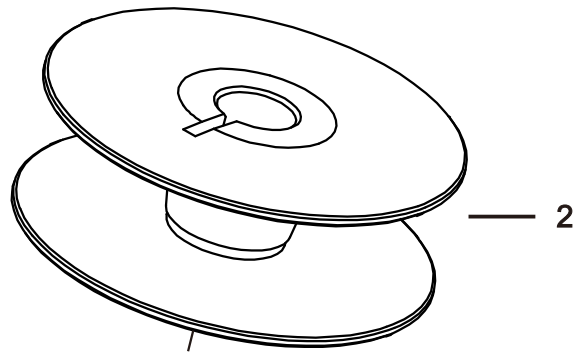
I. 下轴送料部件/Feeding Mechanism



I. 下轴送料部件/Feeding Mechanism

序号 No.	件号 Part No.	零部件名称	Name of parts	数量amt.
1	H05917	开口挡圈5	Opening stop ring 5	1
2	150428017	垫片	Washer	1
3	15040407800	送料曲柄组件	Feeding crank assembly	1
4	150426004	牙架销轴	Tooth rack pin shaft	1
5	150408003	紧圈	Lock ring	4
6	S10018	紧定螺钉M6×0.75×6	Set screw M6×0.75×6	4
7	150428007	垫片	Washer	4
8	150403024	钢套	Bushing	3
9	150403007	轴套	Sleeve	6
10	413S14001	内六角平端紧定螺钉M6×6	Hexagon socket set screw M6×6	9
11	150426011	交替量调节架左销	Alternating adjustment bracket left pin	1
12	H05004	开口挡圈10	Opening stop ring 10	1
13	15040403500	针距调节曲柄大组件	Needle bar adjusting crank large assembly	1
14	150423002	脱脂棉油线φ2	Decontamination cotton thread φ 2	1M
15	S05115	内六角圆柱头螺钉M4×6(滚花)	Hexagon socket head cap screw M4×6 (rolled flower)	3
16	W01001	平垫圈4	Flat washer 4	2
17	150421006	油管Φ5×Φ7(进口)	Oil pipe φ 5×φ 7 (import)	0.25M
18	150423007	脱脂棉油线φ3	Decontamination cotton thread φ 3	0.6M
19	1504NS30003	油管固定圆钢钉φ0.9×13	Oil pipe fixing round head nail φ 0.9×13	1
20	150423006	油毡	Oil felt	1
21	150412035	油毡固定板	Oil felt fixing plate	1
22	150402018	针距调节曲柄轴	Needle bar adjusting crank shaft	1
23	150408005	紧圈	Lock ring	1
24	150403041	针距调节曲柄左轴套	Needle bar adjusting crank left sleeve	1
25	150403010	针距调节曲柄右轴套	Needle bar adjusting crank right sleeve	1
26	150427007	复位弹簧	Reset spring	1
27	150412009	弹簧挂架	Spring holder	1
28	S05124	螺钉M5×16(滚花)	Screw M5×16 (rolled flower)	1
29	150404032	平衡块	Balance Block	1
30	S10009	内六角凹端紧定螺钉M6×8	Hexagon Socket Head Cap Screw M6×8	4
31	150402017	抬牙轴	Tooth holder	1
32	15040403800	抬牙右曲柄大组件	Tooth Extraction Forceps Large Component	1
33	15040403600	抬牙曲柄组件	Tooth Extraction Forceps Component	1
34	150405009	抬牙连杆	Tooth Link Rod	2
35	150428018	送料大连杆垫片	Feeding Connecting Rod Washer	2
36	H05013	开口挡圈6	Open Circlip 6	2
37	S05949	内六角圆柱头螺钉M4×8(12.9级)	Hexagon Socket Head Cap Screw M4×8 (12.9 Grade)	2
38	150414001	单针送料牙(E2)	Single Feeding Tooth (E2)	1
39	15040600100	送料牙架组件	Feeding Tooth Bracket Component	1

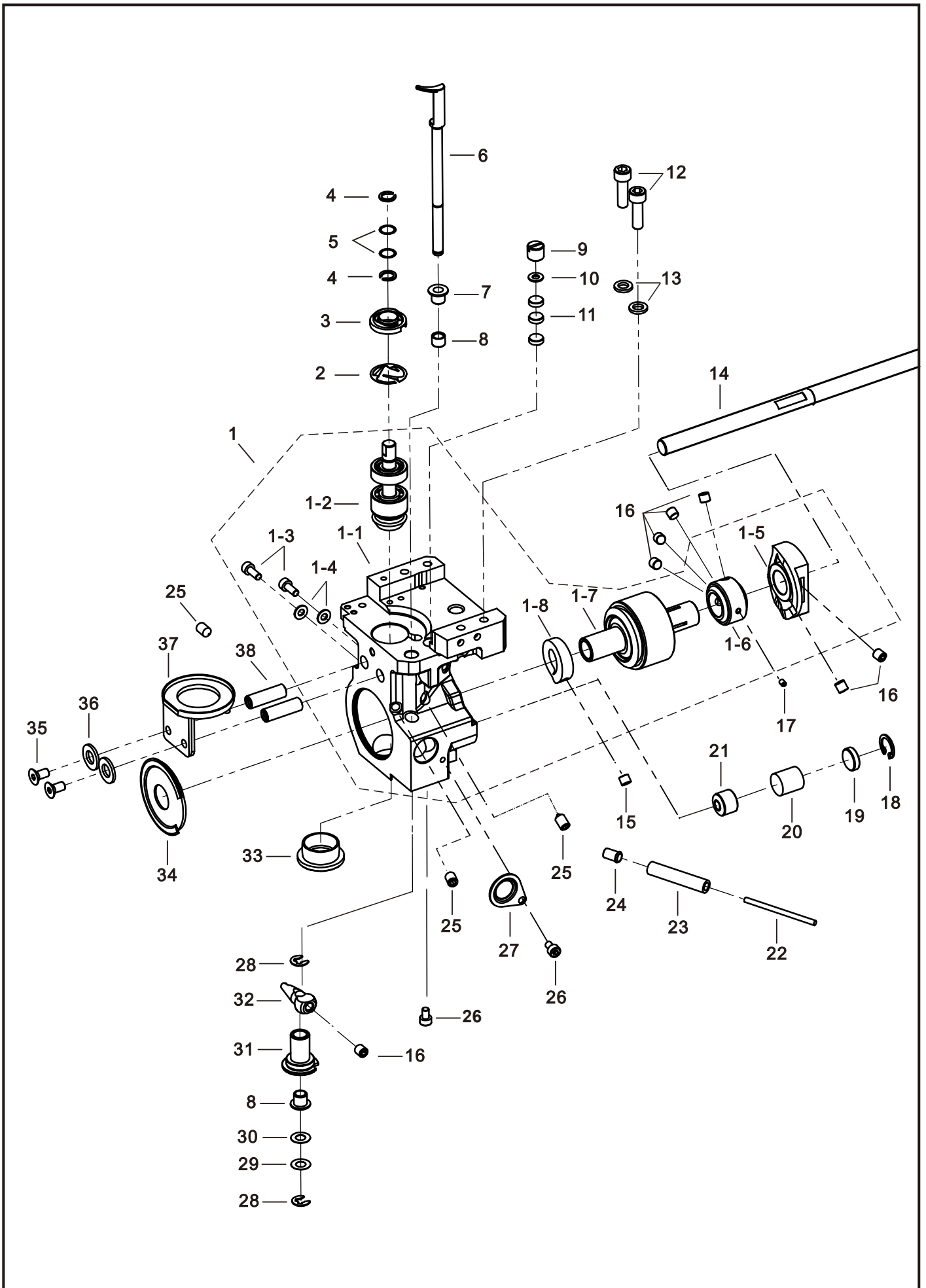
G. 旋梭部件/Rotary Hook Mechanism



G.旋梭部件/Rotary Hook Mechanism

序号 No.	件号 Part No.	零部件名称	Name of parts	数量amt.
1	15041800200	旋梭组件(φ32)	Rotary exchange component (p32)	1
1-1	150418015	梭皮	Eraser	1
1-2	150427005	梭芯止动弹簧(0.36mm)	Lead Core Stop Spring (0.36mm)	1
1-3	1504NS10009	梭皮固定螺钉M2	Screw for fixing rubber cap M2	1
1-4	1504NS10010	梭皮调整螺钉M2	Screw for adjusting rubber cap M2	1
2	150418009	梭芯(φ32)	Needle bar core (p32)	1

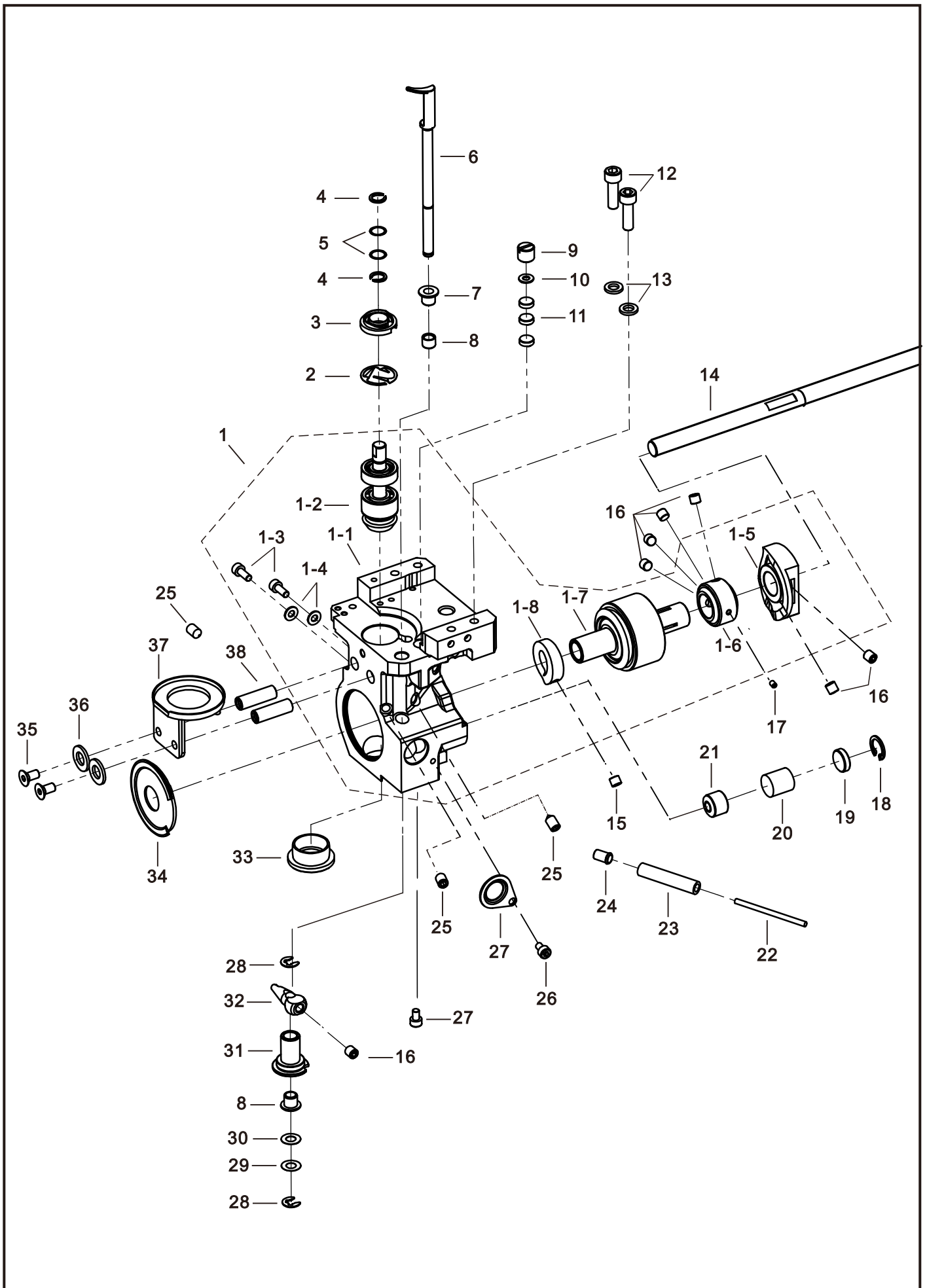
K. 梭架部件/Feed Dog Mechanism



K. 梭架部件/Feed Dog Mechanism

序号 No.	件号 Part No.	零部件名称	Name of parts	数量amt.
1	150400003	右梭架小组件	Right shuttle frame subassembly	1
1-1	150401001	右梭架	Right Shuttle Frame	1
1-2	15042500600	旋梭轴组件	Rotary Hook Shaft Assembly	1
1-3	413S13017	内六角圆柱头螺钉M4×10	Hexagon socket head cap screw M4×10	2
1-4	W01001	平垫圈4	Flat washer 4	2
1-5	150410012	右剪线凸轮	Right Thread Cutter Cam	1
1-6	150403032	夹紧环	Clamping Ring	1
1-7	15042501000	右梭架下轴大齿轮组件	Lower Shaft Large Gear Assembly for Right Shuttle Fra	1
1-8	150410003	分线凸轮	Wire Separator Cam	1
2	150412047	油线弹簧	Oil Felt Spring	1
3	150412006	油线固定圈	Oil Felt Retaining Ring	1
4	150429003	旋梭轴卡簧	Rotary Hook Shaft Snap Ring	2
5	150428012	旋梭轴垫片	Rotary Hook Shaft Shim	2
6	150404049	分线勾	Wire Separator Hook	1
7	150403012	分线勾轴上套	Upper Bushing for Wire Separator Hook Shaft	2
8	150403028	分线勾轴中套	Middle Bushing for Wire Separator Hook Shaft	1
9	S070001	开槽平端紧定螺钉M10×1×9	Slotted Flat Point Set Screw M10×1×9	1
10	W01001	平垫圈4	Flat Washer 4	1
11	150428021	橡胶垫片	Rubber Gasket	3
12	S05240	内六角圆柱头螺钉M6×20	Hex Socket Cap Screw M6×20	2
13	150428025	小垫圈6	Small Washer 6	2
14	150402016	下轴短轴	Lower Shaft Short Axle	1
15	S09010	内六角平端紧定螺钉M6×5	Hex Socket Flat Point Set Screw M6×5	1
16	413S14001	内六角平端紧定螺钉M6×6	Hex Socket Flat Point Set Screw M6×6	7
17	1504NS10001	内六角锥端紧定螺钉M3×5	Hex Socket Taper Point Set Screw M3×5	1
18	H010007	孔用弹性挡圈14	Hole Elastic Retaining Ring 14	1
19	150428011	垫片	Shim	1
20	150409005	分线阻尼块	Wire Separator Damping Block	1
21	150409004	分线滑块	Wire Separator Slider	1
22	150436001	油管接头	Hose Fitting	1
23	150421006	油管Φ5×Φ7(进口)	Hose Φ5×Φ7 (Imported)	0.2M
24	150423007	脱脂棉油线φ3	Coarse grease oil φ3	0.6M
25	S10021	内六角锥端紧定螺钉M6×10(进口)	Hexagon socket head cap screw M6×10 (import)	3
26	S05115	内六角圆柱头螺钉M4×6(滚花)	Hexagon socket head cap screw M4×6 (roller flower)	2
27	150412007	分线凸轮梭架端盖	Split convex shaft cover plate	1
28	H05917	开口挡圈5	Open retaining ring 5	2
29	150428024	垫片6.1×11.8×0.1	Washer 6.1×11.8×0.1	2
30	150403030	垫片(厚度0.3)	Washer 1 (thickness 0.3)	2
31	150403029	下套	Lower sleeve	1
32	15040501700	分线勾摇杆组件	Split uniform rocker component	1

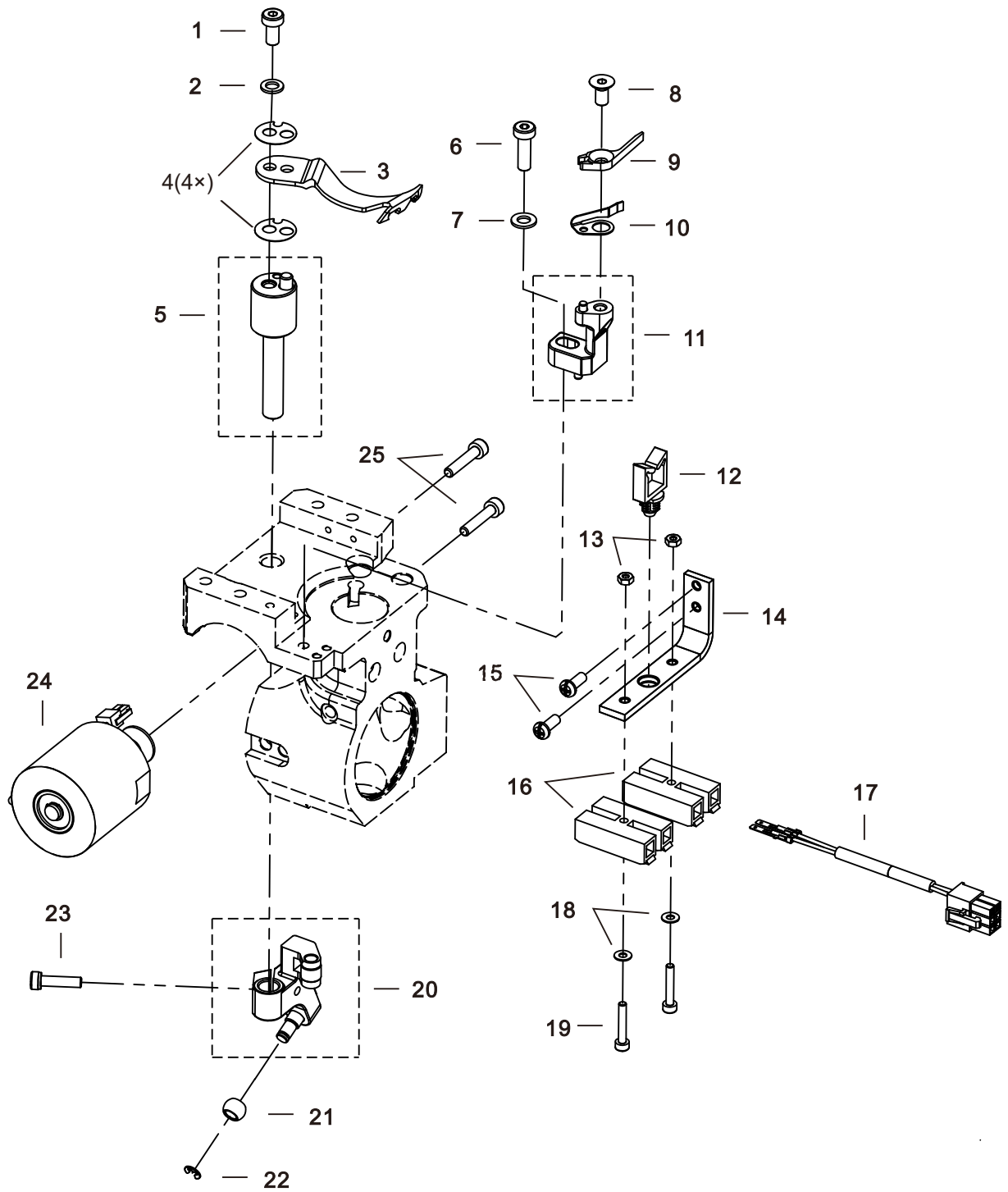
K. 梭架部件/Feed Dog Mechanism



K. 梭架部件/Feed Dog Mechanism

33	12522003	拾牙轴孔塞	Tooth axis hole	1
34	150412005	右梭架下轴端盖	Right bracket lower shaft cover plate	1
35	S260016	内六角沉头螺钉 M5×10(进口)	Hexagon countersunk head screw M5×10 (import)	2
36	W01120	垫圈8	Washer 8	2
37	150422006	防油环(φ32)	Anti-oil ring (φ32)	1
38	150426023	旋梭轴定位销	Spindle axis positioning pin	1

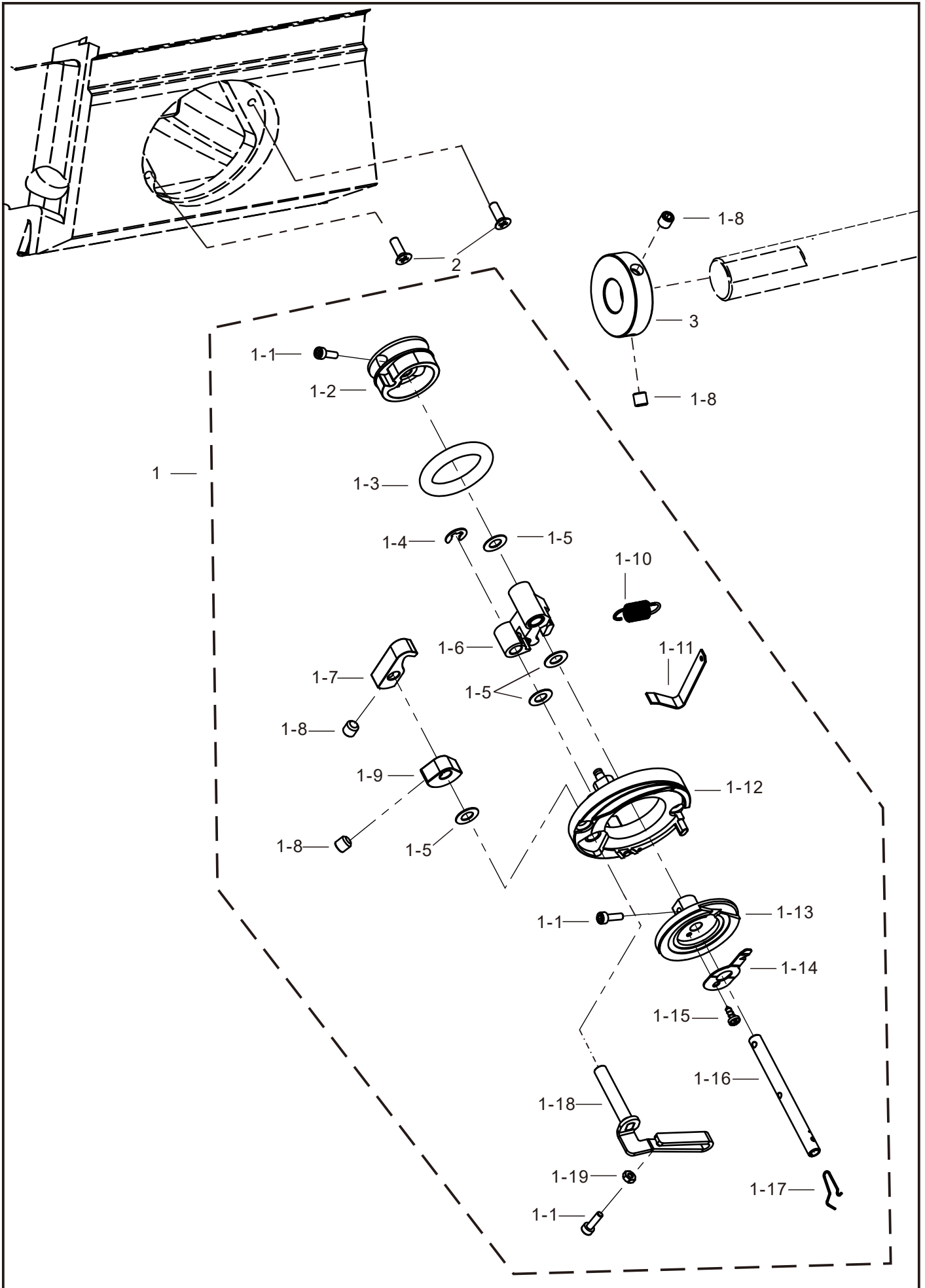
L.剪线部件/Thread Trimmer Mechanism



L. 剪线部件/Thread Trimmer Mechanism

序号 No.	件号 Part No.	零部件名称	Name of parts	数量amt.
1	1504NS13001	内六角薄圆柱头螺钉 M5×10	Hexagon socket cap screw M5×10	1
2	150428022	小垫圈5	Small washer 5	1
3	150419002	动刀	Moving knife	1
4	150428001	动刀垫片	Moving knife gasket	4
5	15041900300	动刀座组件	Moving knife seat assembly	1
6	1504NS13002	内六角薄圆柱头螺钉 M5×16	Hexagon socket cap screw M5×16	1
7	W01009	平垫圈5	Flat washer 5	1
8	S260016	内六角沉头螺钉 M5×10(进口)	Hexagon countersunk head screw M5×10 (imported)	1
9	150419001	定刀	Fixed knife	1
10	150412003	夹线弹片	Clip spring sheet	1
11	15040408000	定刀座组件	Fixed knife seat assembly	1
12	150411028	马鞍型线夹	Horse-shaped line clamp	1
13	N01138	六角螺母M3	Hexagon nut M3	2
14	150412022	剪线电磁铁接头安装板	Cutting electromagnet terminal board	1
15	S040013	复合槽盘头螺钉 M4×10	Composite base plate screw M4×10	2
16	150430018	二进二出接线端子	Two-in-two-out connector terminal	2
17	150430021	剪线电磁铁转接线	Cutting electromagnet transfer wire	1
18	W01011	垫圈3	Gasket 3	2
19	S05601	内六角圆柱头螺钉 M3×18	Hexagon socket head cap screw M3×18	2
20	15040405100	动刀驱动曲柄大组件	Moving blade drive crank major assembly	1
21	150409006	剪线滚珠	Cutting roller ball	1
22	H05002	开口挡圈3	Open cover gasket 3	1
23	207S13008	内六角圆柱头螺钉 (M4×16)	Hexagon socket head cap screw (M4×16)	1
24	15043000300	剪线电磁铁	Cutting electromagnet	1
25	S05119	内六角圆柱头螺钉 M4×20(滚花)	Hexagon socket head cap screw M4×20 (rolled flower)	2

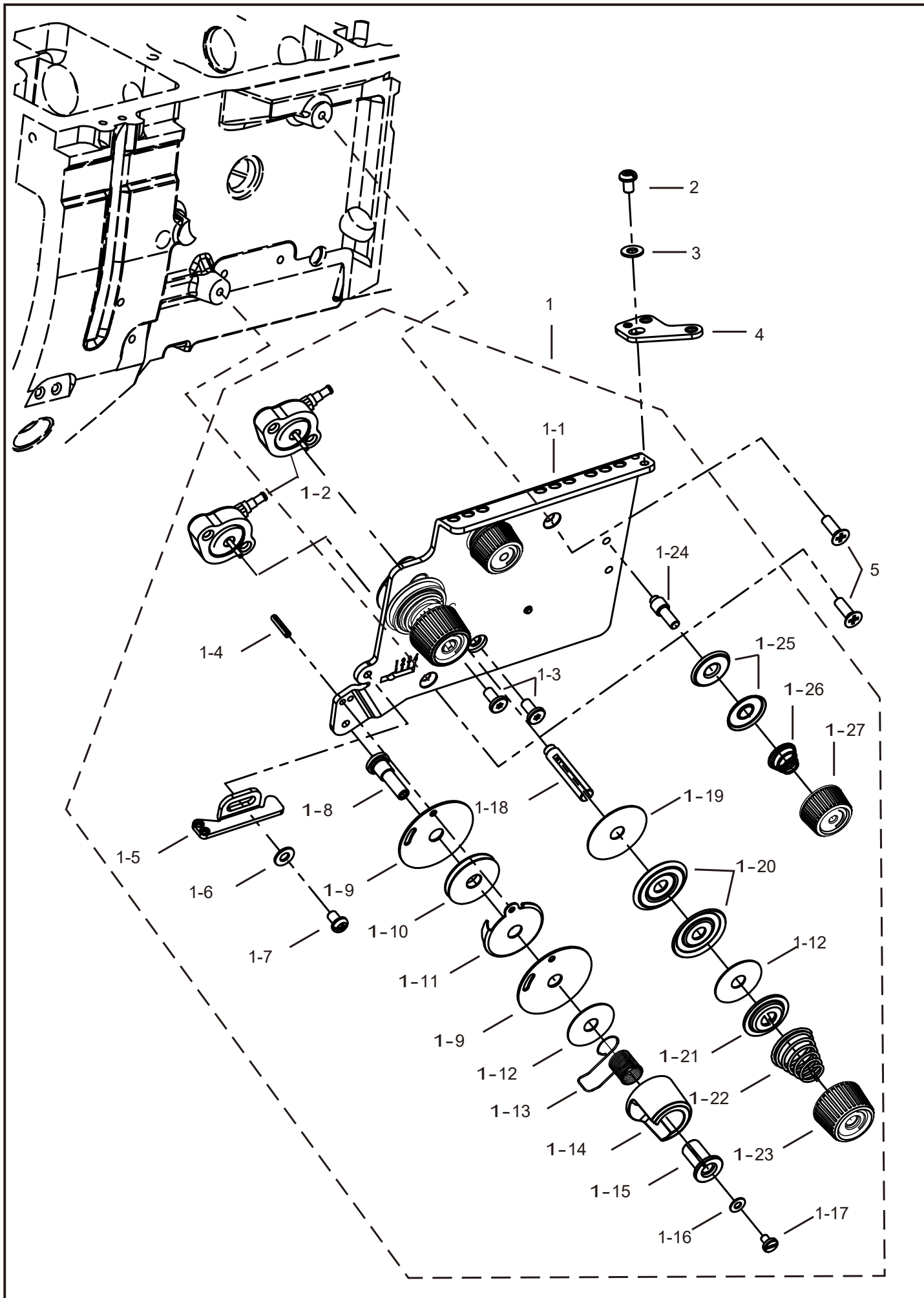
M.绕线部件/ Winder Mechanism



M.绕线部件/ Winder Mechanism

序号 No.	件号 Part No.	零部件名称	Name of parts	数量amt.
1	15043100100	绕线器组件	Winder assembly	1
1-1	S050082	内六角圆柱头螺钉 M3×10	Hexagon socket head cap screw M3 x 10	3
1-2	150411045	绕线轮	Wire groove wheel	1
1-3	O010005	O型密封圈φ26×φ6	O-ring seal φ26 x φ6	1
1-4	H05917	开口挡圈5	Open cover G	1
1-5	150428017	垫片	Washer	4
1-6	15040304700	绕线轮曲柄组件	Wire groove camshaft assembly	1
1-7	150404082	滚轮止动块	Roller stopper block	1
1-8	413S14001	内六角平端紧定螺钉 M6×6	Hexagon flat head cap screw M6 x 6	4
1-9	150404083	绕线凸轮	Wire groove convex wheel	1
1-10	150427019	绕线器复位弹簧	Wire groove return spring	1
1-11	150412050	复位弹簧片	Return spring sheet	1
1-12	15040101600	绕线器座组件	Wire groove seat component	1
1-13	150411050	绕线衬垫	Wire groove filler	1
1-14	150419004	割线刀	Wire groove knife	1
1-15	S16026	十字槽半圆头自攻螺钉 ST3.0×8	Cross recessed pan head tapping screw ST3.0 x 8	1
1-16	150402031	绕线器轴	Winding machine shaft	1
1-17	150427020	绕线器轴卡簧	Winding machine shaft spring	1
1-18	15040203000	绕线器扳手组件	Wire groove wrench set	1
1-19	N010020	六角螺母M3	Hex nut M3	1
2	421S17001	十字沉头螺钉 M4×12	Cross recessed countersunk head screw M4 x 12	2
3	150408011	绕线器驱动轮	Wire groove drive wheel	1

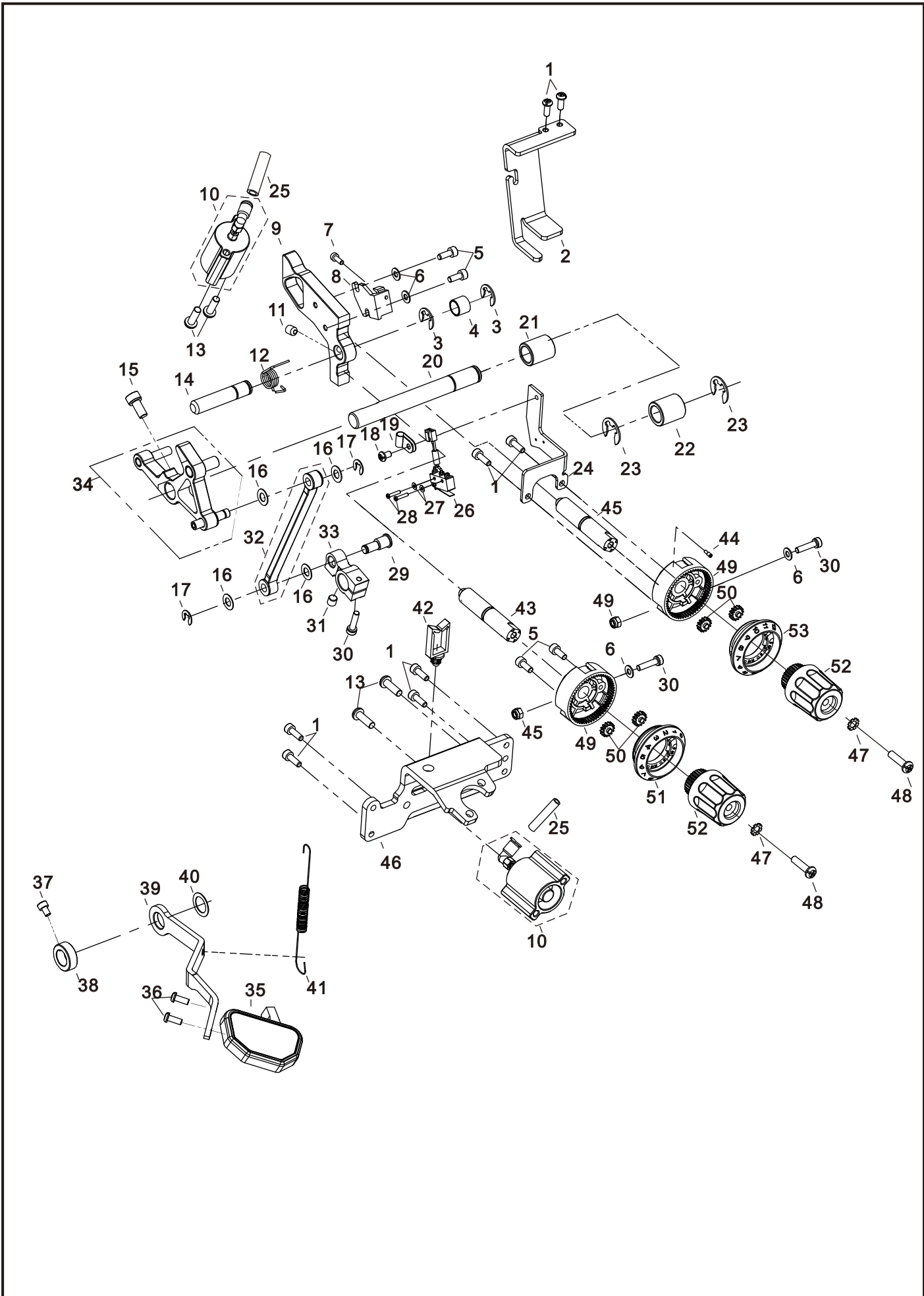
N.夹线器部件/Bobbin Winder Mechanism



N.夹线器部件/Bobbin Winder Mechanism

序号 No.	件号 Part No.	零部件名称	Name of parts	数量amt.
1	15041300100	夹线器组件(单针)	Single-needle thread clamp assembly	1
1-1	150412011	夹线器安装板	Wire Winding Installation Plate	1
1-2	15041106600	气缸体组件	Cylinder Assembly	2
1-3	1504NS30004	梅花槽圆柱头螺钉M4×8	Hexagonal Recessed Head Screw M4 × 8	4
1-4	150426031	导向销	Orientation Pin	1
1-5	150412045	导线板	Guide Rail	1
1-6	W01001	平垫圈4	Flat Washer 4	1
1-7	S04035	复合槽螺钉M4×6(进口)	Compound Stud Screw M4 × 6 (Imported)	1
1-8	150402028	挑线簧轴	Tensioning Spring Shaft	1
1-9	150412043	导线器挡板	Wire Guide Cover Plate	2
1-10	150410014	导线轮	Guide Wheel	1
1-11	150412044	导线轮压板	Wire Guide Press Plate	1
1-12	150428003	夹线软垫片(小)	Wire Clamp Gasket (Small)	3
1-13	150427015	挑线簧	Tensioning Spring	1
1-14	150411025	挑线簧罩	Tensioning Spring Cover	1
1-15	150403033	挑线簧衬套	Tensioning Spring Bushing	1
1-16	W01011	垫圈3	Flat Washer 3	1
1-17	207S10003	开槽圆柱头螺钉M3×4.5	Slotted Recessed Head Screw M3 × 4.5	1
1-18	150425013	夹线器螺杆	Wire Clamp Bolt	2
1-19	150428002	夹线软垫片	Wire Clamp Gasket	2
1-20	150413008	夹线板	Wire Clamp Plate	4
1-21	150413009	松线板	Release Plate	2
1-22	150427014	夹线簧	Wire Clamp Spring	2
1-23	150411058	夹线螺母	Wire Clamp Nut	2
1-24	150402041	小夹线器轴	Small Wire Clamp Shaft	2
1-25	150413007	小夹线板	Small Wire Clamp Plate	4
1-26	150427013	小夹线器夹线簧	Small Wire Clamp Spring	2
1-27	150411057	小夹线螺母	Small Spring Nut	2
2	S04035	复合槽螺钉M4×6(进口)	Composite Screw Bolt M4×6 (Import)	1
3	W01001	平垫圈4	Flat Washer 4	1
4	150412012	绕线器过线板	Wire Winding Plate	1
5	421S17001	十字沉头螺钉M4×12	Cross Recessed Countersunk Head Screw M4×12	2

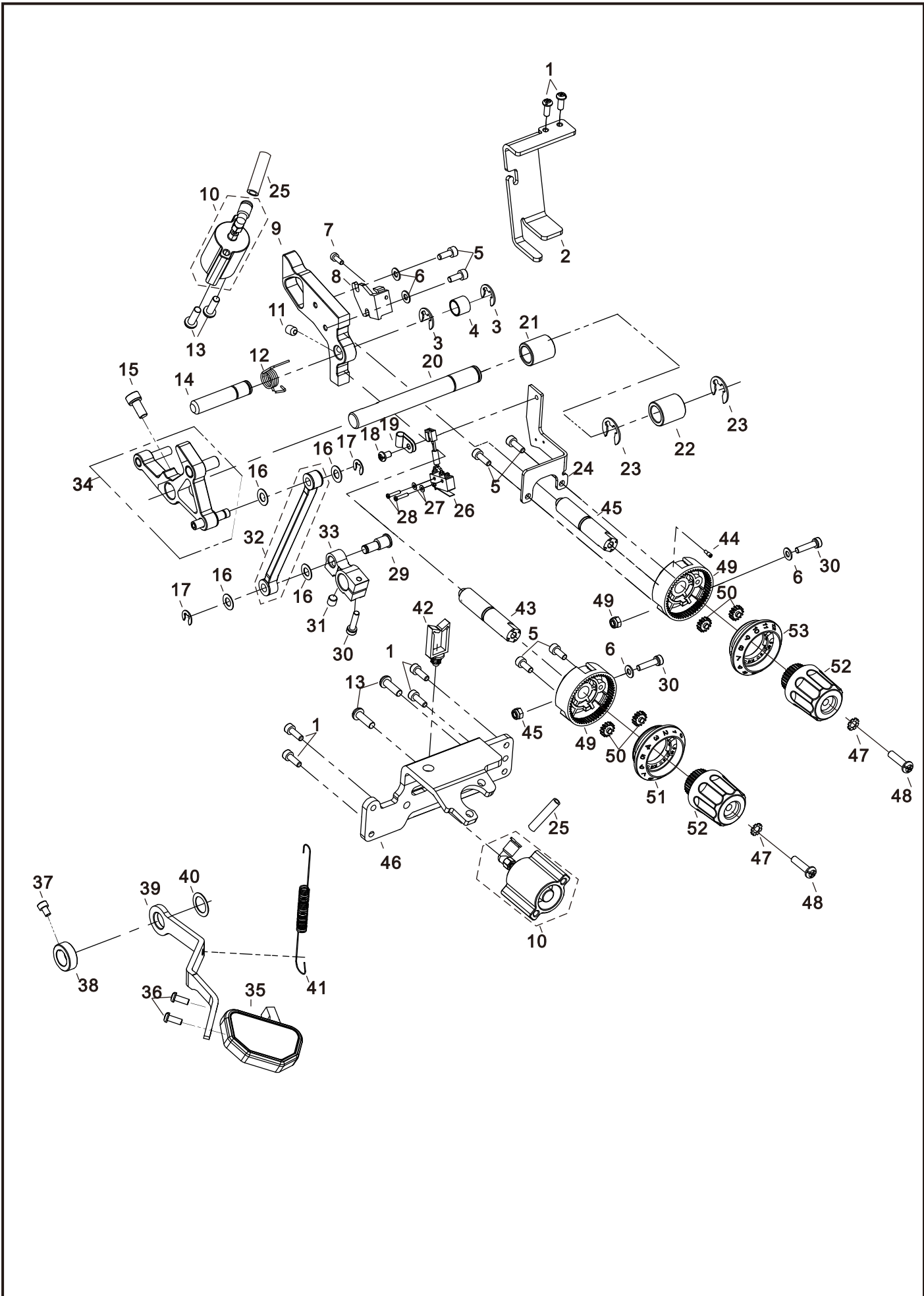
I. 针距调节部件/Stitch length adjustment component



I.针距调节部件/Stitch length adjustment component

序号 No.	件号 Part No.	零部件名称	Name of parts	数量amt.
1	S05133	内六角圆柱头螺钉 M4×12	Hexagon socket cap screw M4×12	8
2	150412040	过线支架	Thread guide bracket	1
3	H05008	挡圈8	Retaining ring 8	2
4	150403011	针距调节架轴套	Needle pitch adjustment frame bushing	1
5	413513017	内六角圆柱头螺钉 M4×10	Hexagon socket cap screw M4×10	4
6	W01001	平垫圈4	Flat washer 4	4
7	S05052	内六角圆柱头螺钉 M3×10	Hexagon socket cap screw M3×10	1
8	150412038	针距限速调节开关	Needle pitch speed limit adjustment switch	1
9	150404055	针距调节座	Needle pitch adjustment seat	1
10	15043000400	倒缝气缸组件	Reverse stitch cylinder assembly	2
11	S10009	内六角凹端紧定螺钉 M6×8	Hex socket set screw with cup point M6×8	1
12	150427004	针距扭簧	Needle pitch torsion spring	1
13	S05124	螺钉M5×16(滚花)	Knurled screw M5×16	4
14	150402015	针距座轴	Needle pitch seat shaft	1
15	S05962	内六角圆柱头螺钉 M6×12	Hex socket cap screw M6×12	1
16	150428017	垫片	Shim	4
17	H05917	开口挡圈5	Retaining ring 5	2
18	S04035	复合槽螺钉M4×6(进口)	Compound slot screw M4×6 (imported)	1
19	150411040	R型线夹(Φ5)	R-type wire clamp (Φ5)	1
20	150404061	倒缝轴	Reverse sewing shaft	1
21	150403041	针距调节曲柄左轴套	Needle pitch adjustment crank left bearing sleeve	1
22	150403010	针距调节曲柄右轴套	Needle pitch adjustment crank right bearing sleeve	1
23	H05004	开口挡圈10	Retaining ring 10	2
24	150412013	限速微动开关支架	Speed limit micro switch bracket	1
25	41845223	气管φ4×φ2.5	Air tube φ 4×φ 2.5	0.28M
26	150412039	限速微动开关	Speed limit micro switch	1
27	W010004	平垫圈 2	Flat washer 2	2
28	S01112	开槽圆柱头螺钉 M2×10	Slotted cylinder head screw M2×10	2
29	150426029	偏心销	Eccentric pin	1
30	207513008	内六角圆柱头螺钉 (M4×16)	Hexagon socket cap screw (M4×16)	3
31	413514001	内六角平端紧定螺钉 M6×6	Hexagon socket set screw with flat point M6×6	1
32	15040502200	针距调节连杆组件	Needle pitch adjustment connecting rod assembly	1
33	150404071	针距调节右曲柄	Needle pitch adjustment right crank	1
34	15040405600	针距调节架组件	Needle pitch adjustment frame assembly	1
35	150404062	倒缝手柄	Reverse sewing handle	1
36	S040013	复合槽盘头螺钉 M4×10	Composite slot pan head screw M4×10	2
37	S05115	内六角圆柱头螺钉 M4×6(滚花)	Knurled hexagon socket cap screw M4×6	1
38	150408005	紧圈	Snap ring	1
39	150412014	倒缝压杆	Reverse sewing pressure rod	1
40	150428014	垫片	Shim	1
41	150427016	拉簧	Tension spring	1
42	150411029	马鞍型线夹	Saddle-type wire clamp	1
43	150425012	针距调节螺杆	Needle pitch adjustment screw	2

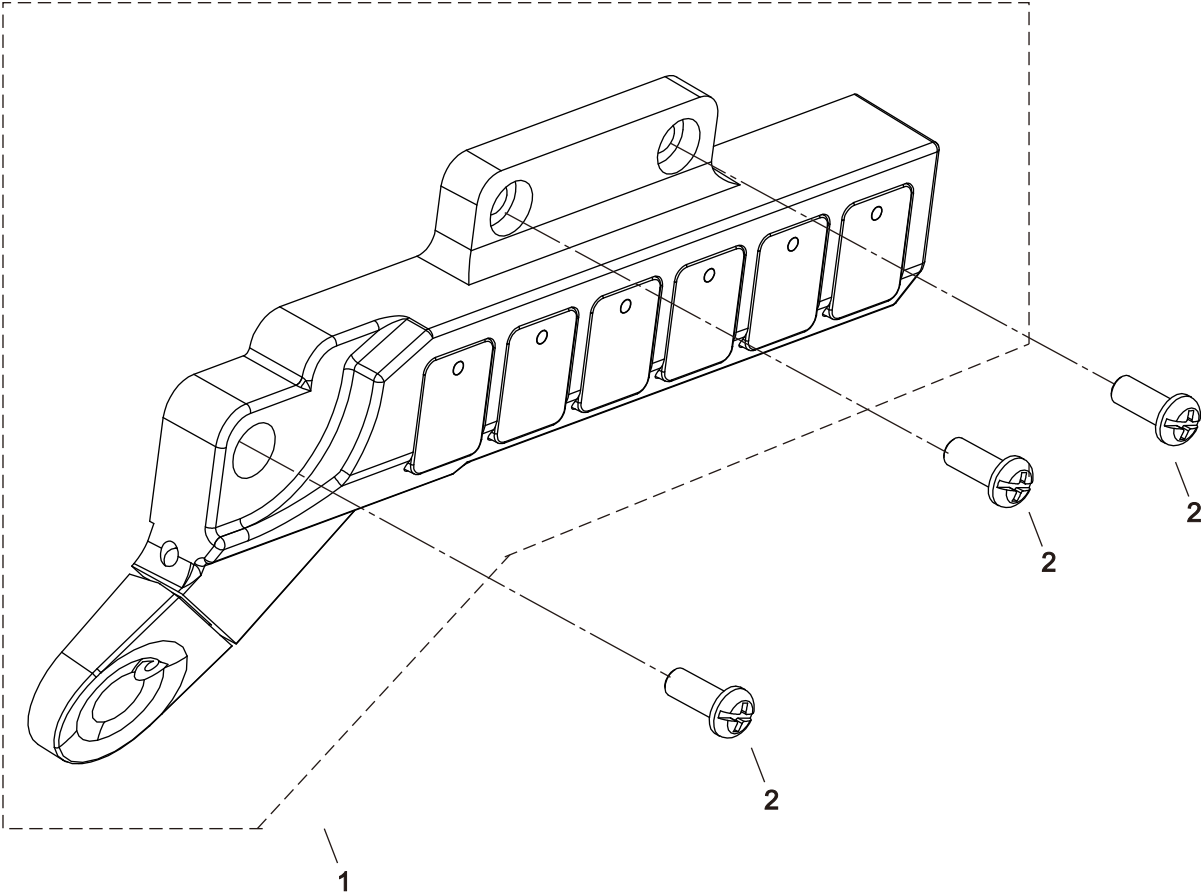
I. 针距调节部件/Stitch length adjustment component



I.针距调节部件/Stitch length adjustment component

44	1504NS10003	针距限位螺钉	Needle pitch limit screw	1
45	N080002	1型非金属嵌件六角锁紧螺母 M4	Type 1 non-metallic insert hex lock nut M4	2
46	150412018	气缸安装支架	Cylinder mounting bracket	1
47	W050001	外齿锁紧垫圈 M5	External tooth lock washer M5	2
48	S040016	复合槽盘头螺钉 M5×20	Compound slot pan head screw M5×20	2
49	150404070	针距调节轮座	Needle bar adjustment sleeve	2
50	150425008	针距调节齿轮	Needle bar adjustment gear	4
51	150411053	第二针距刻度盘	Second needle pitch scale dial	1
52	150411020	针距旋钮	Needle pitch knob	2
53	150411015	第一针距刻度盘	First needle pitch scale disc	1

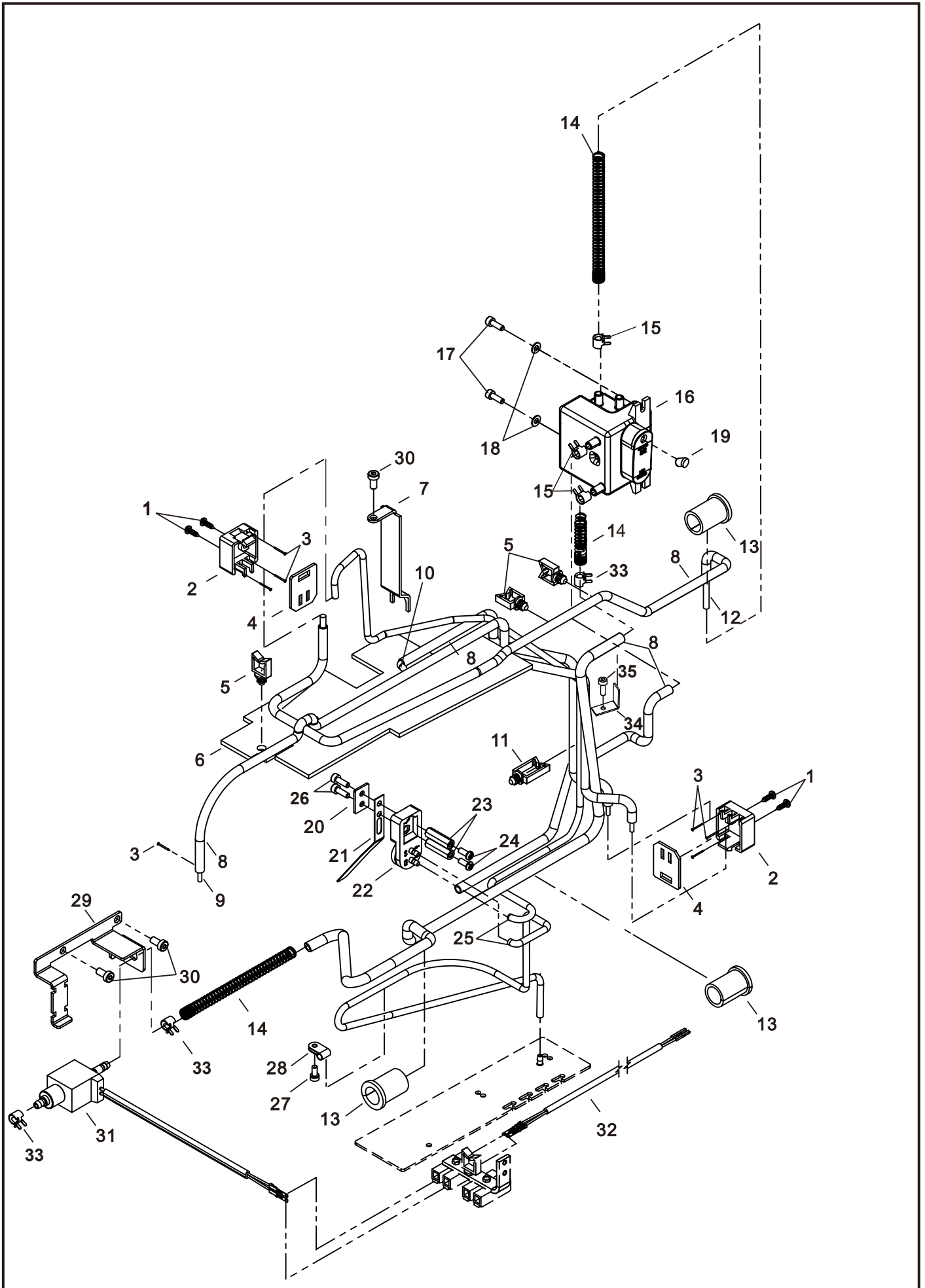
P.按钮部件/Button Mechanism



P.按钮部件/Button Mechanism

序号 No.	件号 Part No.	零部件名称	Name of parts	数量
1	15041100800	快捷键组件	Key combination component	1
2	S040013	复合槽盘头螺钉M4×10	Hex socket pan head screw M4 × 10	3

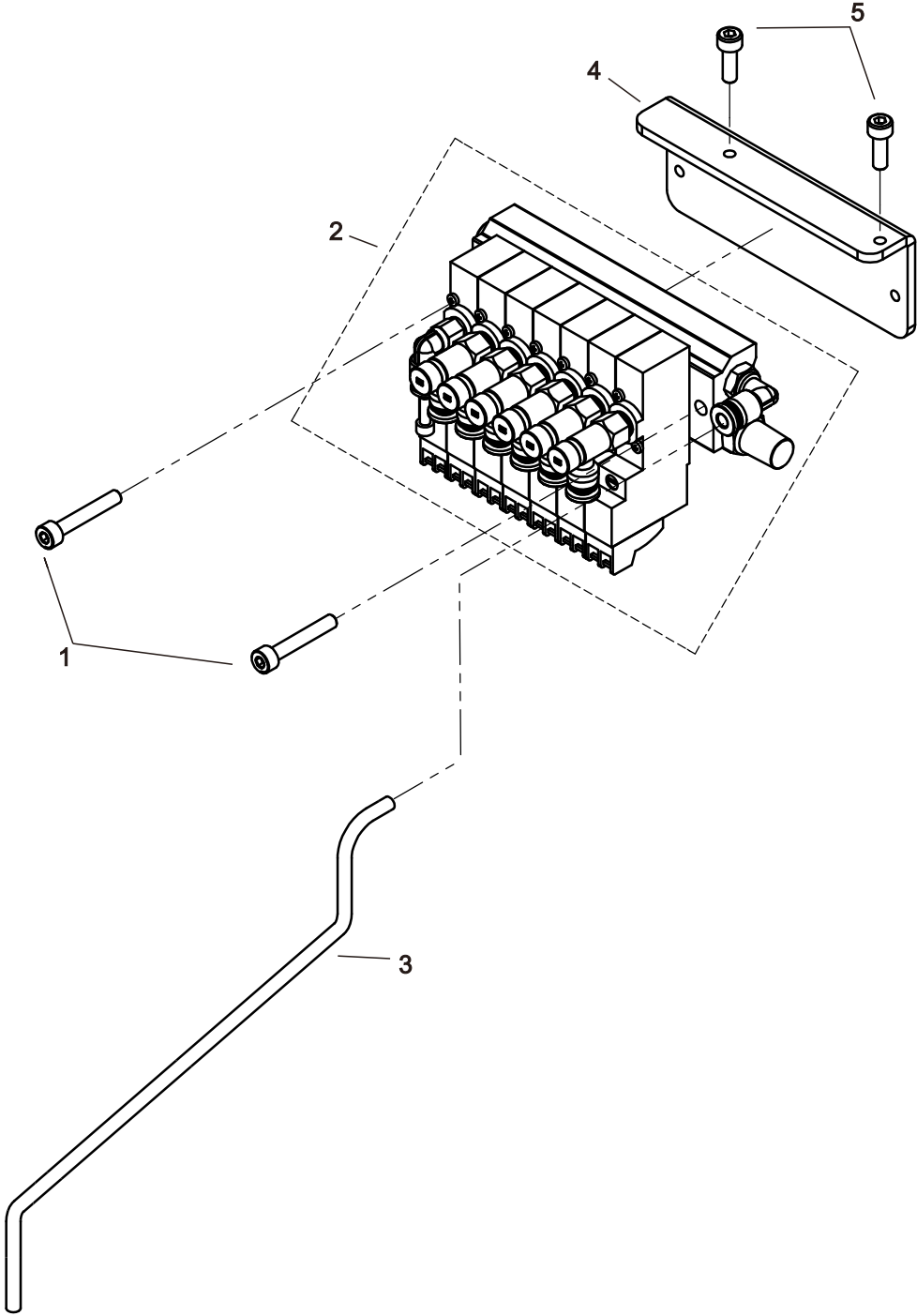
Q.供油润滑部件/Lubrication Mechanism



Q.供油润滑部件/Lubrication Mechanism

序号 No.	件号 Part No.	零部件名称	Name of parts	数量amt.
1	1950NS30002	一十字槽大盘头自攻螺钉 ST3.5×12	Pan Head Self-Tapping Screw with Cross Recess ST3.5×12	4
2	150411003	分油盒	Oil Distributor Box	2
3	1504NS30003	油管固定圆钢钉 φ0.9×13	Round Steel Pin for Oil Pipe Fixing φ 0.9×13	5
4	150411004	分油盒盖	Cover for Oil Distributor Box	2
5	150411028	马鞍型线夹	Saddle Type Cable Clamp	3
6	150423008	机壳内部大油毡	Large Oil Felt Inside the Housing	1
7	150412064	固定板	Mounting Plate	1
8	150421006	油管Φ5×Φ7(进口)	Oil Pipe Φ 5×Φ 7(Imported)	2.55M
9	150423011	羊毛油线φ3紧	Wool Oil Thread φ 3 Tight	1.5M
10	150423012	羊毛油线φ3松	Wool Oil Thread φ 3 Loose	1.8M
11	150411029	马鞍型线夹	Saddle Type Cable Clamp	1
12	150423013	脱脂棉油线φ4.5	Degreased Cotton Oil Thread φ 4.5	0.75M
13	150422009	橡胶圈	Rubber Ring	3
14	150427024	油管弹簧φ8	Spring for Oil Pipe φ 8	3
15	30129006	油管卡簧(大)	Oil pipe retaining ring (large)	3
16	15041100200	油盒组件	Oil Pan Assembly	1
17	413513017	内六角圆柱头螺钉M4×10	Hexagon socket cap screw ×12	2
18	W01001	平垫圈4	Flat Washer 4	2
19	150422019	油盒孔塞	Plug for Oil Pan Hole	1
20	150412025	油泵弹簧片固定板	Fixing Plate for Oil Pump Spring Sheet	1
21	150412024	油泵弹簧片	Spring Sheet for Oil Pump	1
22	15042000100	油泵组件	Oil Pump Assembly	1
23	150403019	油泵安装柱	Mounting Pillar for Oil Pump	2
24	5040013	复合槽盘头螺钉 M4×10	Composite Slot Pan Head Screw M4×10	2
25	12921002	维尼龙油管(φ3×φ5)(进口)	Vinyl Oil Pipe (Φ 3×Φ 5)(Imported)	1.3M
26	S05133	内六角圆柱头螺钉M4×12	Metric hex socket cap screw, size M4×12	2
27	S05949	内六角圆柱头螺钉 M4×8(12.9级)	Hex Socket Cylindrical Head Screw M4×8(Grade12.9)	1
28	150411040	R型线夹(Φ5)	R-Type Cable Clamp (Φ 5)	1
29	150412060	油量电磁阀支架	Bracket for Oil Volume Solenoid Valve	1
30	1504NS13001	内六角薄圆柱头螺钉 M5×10	Thin Hex Socket Cylindrical Head Screw M5×10	3
31	150430029	精准供油电磁阀	Precision Oil Supply Solenoid Valve	1
32	150430028	电子油阀转接线	Electronic Oil Valve Connector	1
33	20429001	油管卡簧	Oil tube retaining ring	3
34	150412004	油管限位板	Oil pipe retaining plate	1
35	S05962	内六角圆柱头螺钉M6×12	Hexagon socket cylindrical head screw M6×12	1

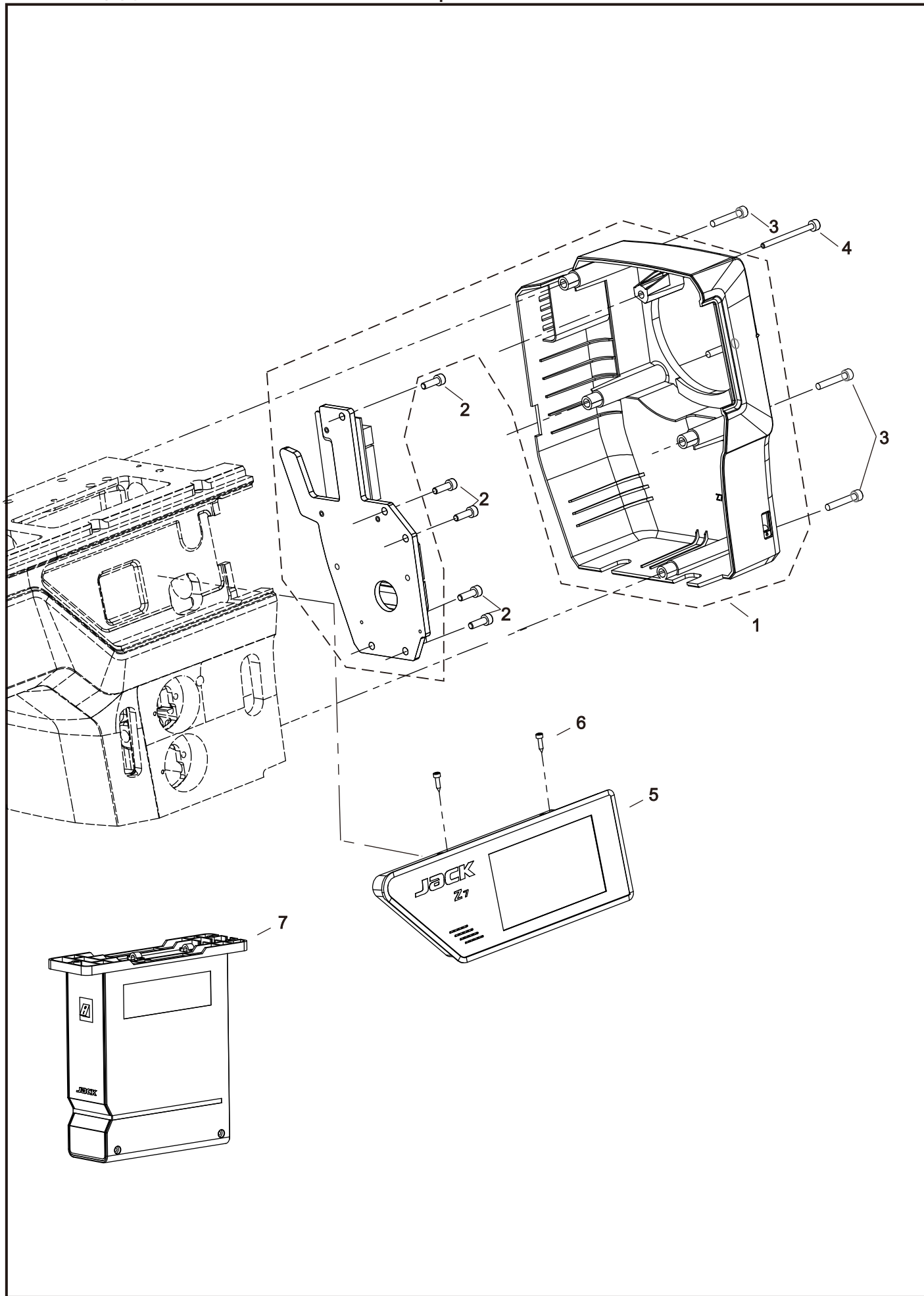
R.电磁阀部件/Electromagnetic valve component



R.电磁阀部件/Electromagnetic valve component

序号 No.	件号 Part No.	零部件名称	Name of parts	数量amt.
1	S05006	内六角圆柱头螺钉 M4×25	Hexagon socket cylinder head screw M4×25	2
2	15044501600	电磁阀组件(七联)	Electromagnetic valve assembly (seven-way)	1
3	41845223	气管φ4×φ2.5	Air pipe φ 4×φ 2.5	1M
4	150412057	电磁阀固定支架	Electromagnetic valve mounting bracket	1
5	S05133	内六角圆柱头螺钉 M4×12	Hexagon socket cylinder head screw M4×12	2

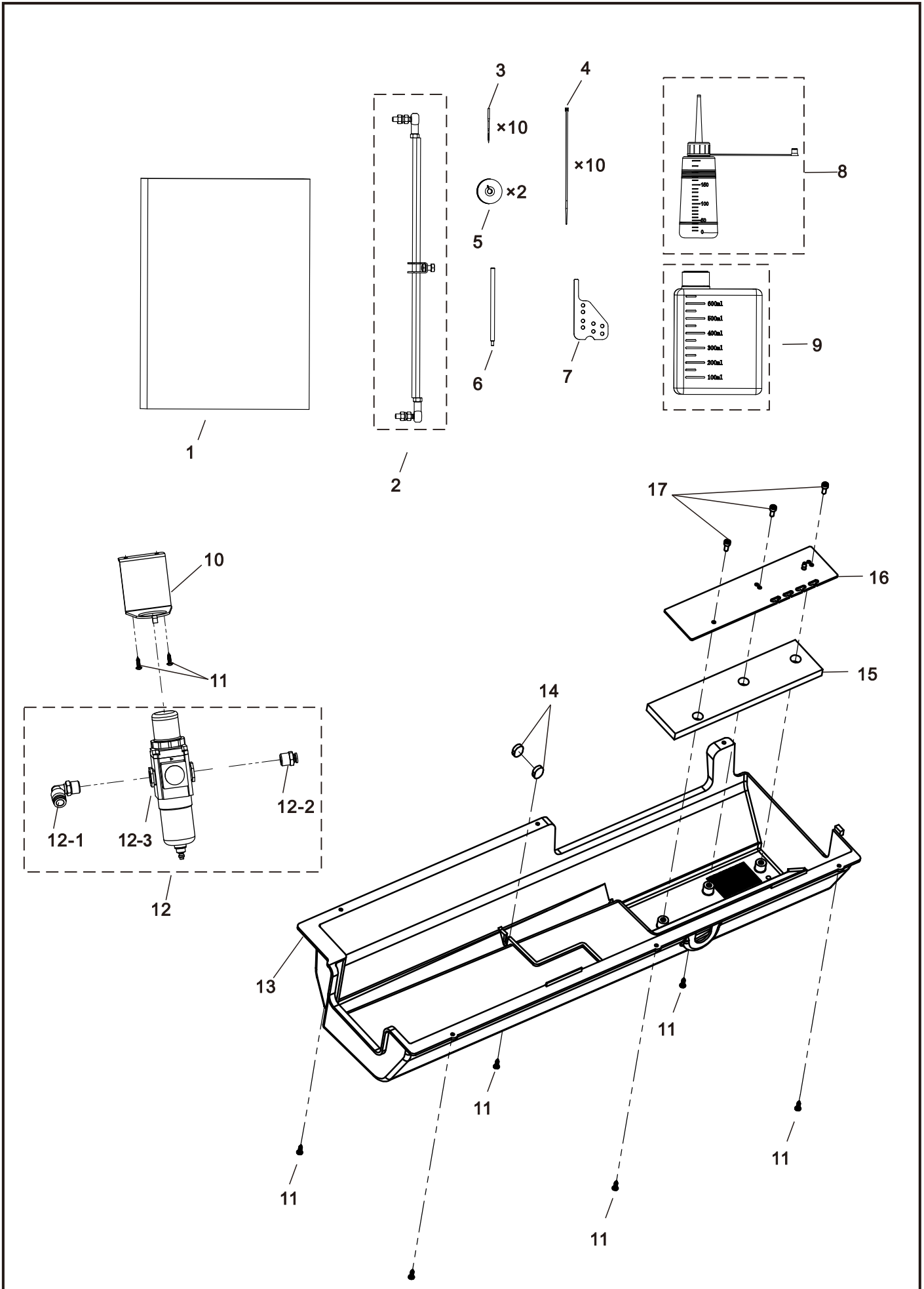
S.电控部件/ Electrical control components



S.电控部件/ Electrical control components

序号 No.	件号 Part No.	零部件名称	Name of parts	数量amt.
1	15043002700	转接板组件	Adapter Plate Assembly	1
2	S05124	螺钉M5×16(滚花)	Knurled Screw M5×16	5
3	S05957	内六角圆柱头螺钉 M5×30	Hexagon Socket Cap Screw M5×30	4
4	150403003	内六角圆柱头螺钉 M4×55	Hexagon Socket Cap Screw M4×55	1
5	150428010	操作面板组件	Operation Panel Assembly	1
6	207513008	操作面板螺钉	Operation Panel Screw	2
7	W01001	下挂电控箱组件	Under-hung Electrical Control Box Assembly	1

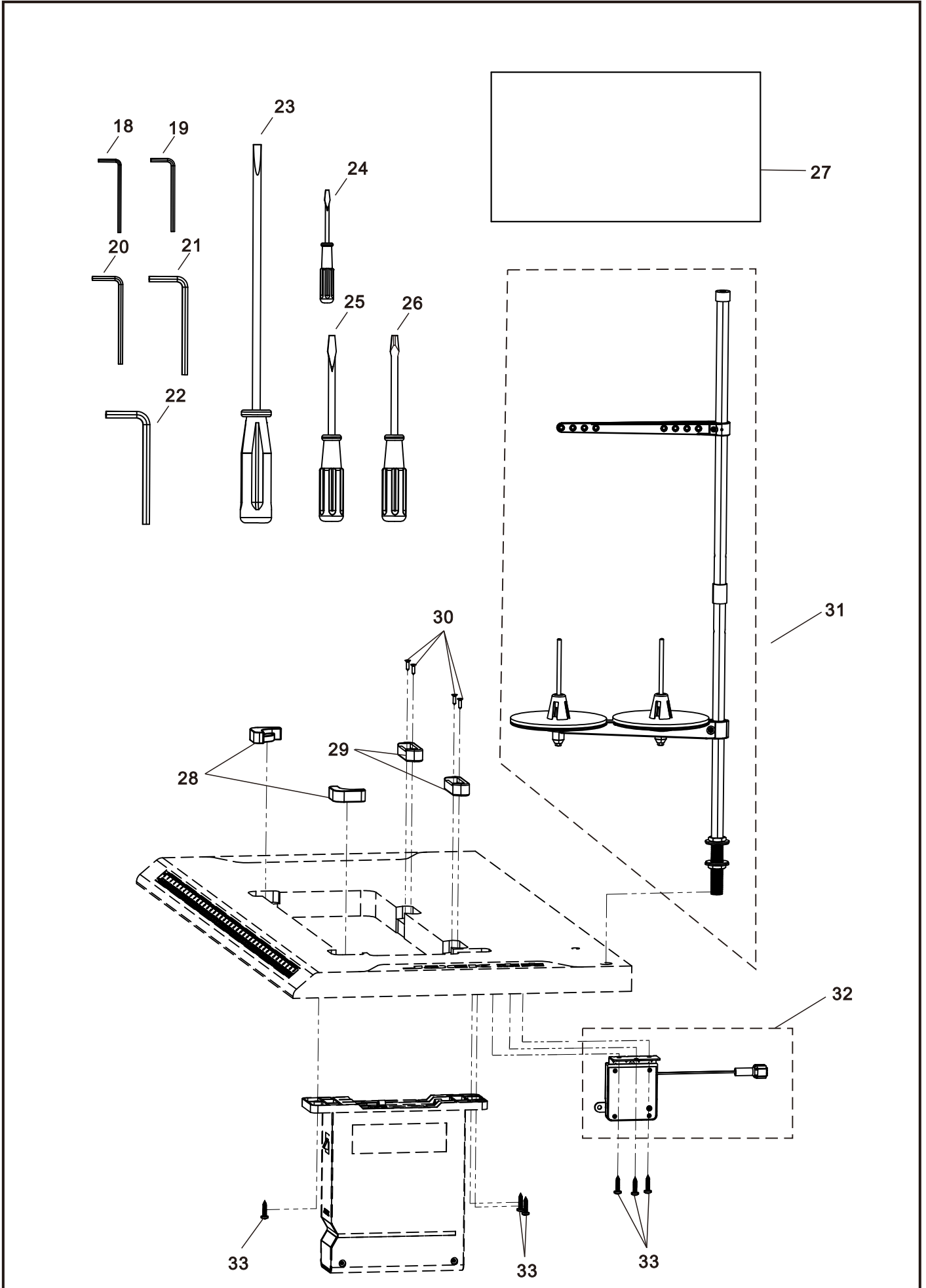
T.附件/Accessories



T.附件/Accessories

序号 No.	件号 Part No.	零部件名称	Name of parts	数量amt.
1	150431008	使用说明	Operating Instructions	1
2	20730335	调速器拉杆组件	Speed Regulator Lever Assembly	1
3	150417002	机针DP×35R 19#	Machine Needle DP×35R 19#	10
4	113811004	自锁式尼龙扎带4×150(示意图)	Auto Type Nylon Belt 4×150 (Schematic Diagram)	10
5	150418009	梭芯(φ32)	Bobbin Case (φ32)	2
6	150426036	校车定位销	Guide Pin for Positioning	1
7	150401021	靠边器转接板	Angle Adjustment Plate	1
8	11631008	油壶组件	Oil Tank Assembly	1
9	20131037	油壶	Oil Cap	1
10	150412062	气阀支架	Air Nozzle Holder	1
11	1950NS30002	一十字槽大盘头自攻螺钉 ST3.5×12	Cross Recess Large Flange Head Self-tapping Screw ST3.5×12	8
12	5044500100	亚德客过滤器组件GAFR20008ASJ	Airtac filter element GAFR20008ASJ	1
12-1	182945027	L型接头	L-shaped Fitting	1
12-2	40736045	螺纹直通接头APC4-02	Threaded straight coupling APC4-02	1
12-3	150445025	亚德客过滤器组件GAFR20008ASJ	Airtac filter element GAFR20008ASJ	1
13	150401008	油盘	Oil Pan	1
14	12923005	油毡	Oil Mat	2
15	150423010	吸油垫	Oil Absorbent Pad	1
16	150411044	油毡盖板	Oil Pan Cover	1
17	413S13017	内六角圆柱头螺钉M4×10	Hexagon Socket Head Cap Screw M4×10	3

T.附件/Accessories



T.附件/Accessories

18	20131046	内六角扳手2mm	Inner Hexagon Wrench 2mm	1
19	30131010	内六角扳手2.5mm	Inner Hexagon Wrench 2.5mm	1
20	30131012	内六角扳手3mm	Inner Hexagon Wrench 3mm	1
21	20131047	内六角扳手4mm	Inner Hexagon Wrench 4mm	1
22	20131056	内六角扳手5mm	Inner Hexagon Wrench 5mm	1
23	20731047	螺丝刀(大)	Screwdriver (Large)	1
24	10131004	螺丝刀(小)	Screwdriver (Small)	1
25	10131003	螺丝刀(中)	Screwdriver (Medium)	1
26	40731014	十字螺丝刀	Crosshead Screwdriver	1
27	150431006	防尘罩90×50(cm)厚0.08mm	Dust Cover 90 × 50(cm) Thickness 0.08mm	1
28	150411042	机头垫	Machine Head Pad	2
29	150411041	铰链座	Hinge Socket	2
30	S19018	十字槽沉头木螺钉4×16	Cross Recess Countersunk Wood Screw 4 × 16	4
31	15043101500	综合送料线架组件(单针)	Comprehensive Feeding Wire Harness Assembly (Single Needle)	1
32	15043002600	调速器	Throttle	1
33	S160009	十字槽盘头自攻螺钉ST5.5×25	Cross Recess Pan Head Self-Tapping Screw ST5.5 × 25	6

成套智联 让服装智造无限可能



杰克股份官方微信



杰克股份官方抖音



杰克资料库



参观杰克

400-8876-858
www.chinajack.com

杰克科技股份有限公司
浙江省台州市椒江区东海大道东段1008号
电话 :0086-576-88177788 88177789
传真 :0086-576-88177758

JACK TECHNOLOGY CO.,LTD
No.1008, Donghai Road East, Jiaojiang District,
Taizhou city, Zhejiang, China
TEL:0086-576-88177788 88177789
FAX:0086-576-88177758